

## Genome-wide association study meta-analysis of suicide attempt identifies twelve genome-wide significant loci and implicates genetic risks for specific health factors

Anna R Docherty, PhD<sup>1,2,3†\*</sup>, Niamh Mullins, PhD<sup>4,5\*</sup>, Allison E Ashley-Koch, PhD<sup>6\*</sup>, Xuejun Qin, PhD<sup>6</sup>, Jonathan R I Coleman, PhD<sup>7,8</sup>, Andrey Shabalin, PhD<sup>1,2</sup>, JooEun Kang, PhD<sup>9</sup>, Balasz Murnyak, PhD<sup>1,2</sup>, Frank Wendt, PhD<sup>10</sup>, Mark Adams, PhD<sup>11</sup>, Adrian I Campos, PhD<sup>12,13</sup>, Emily DiBlasi, PhD<sup>1,2</sup>, Janice M Fullerton, PhD<sup>14,15</sup>, Henry R Kranzler, MD<sup>16,17</sup>, Amanda Bakian<sup>2</sup>, Eric T Monson, MD, PhD<sup>2</sup>, Miguel E Rentería, PhD<sup>12,18</sup>, Consuelo Walss-Bass, PhD<sup>19</sup>, Ole A Andreassen, MD, PhD<sup>20,21</sup>, Cynthia M Bulik, PhD<sup>22,23,24</sup>, Howard J Edenberg, PhD<sup>25,26</sup>, Ronald C Kessler, PhD<sup>27</sup>, J John Mann, MD<sup>28</sup>, John I Nurnberger Jr., MD, PhD<sup>29,29</sup>, Giorgio Pistis, PhD<sup>30</sup>, Fabian Streit, PhD<sup>31</sup>, Robert J Ursano, MD<sup>32</sup>, Renato Polimonti, PhD<sup>10</sup>, Michelle Dennis, BS<sup>33</sup>, Melanie Garrett, MS<sup>34</sup>, Lauren Hair, MS<sup>35</sup>, Philip Harvey, PhD<sup>36</sup>, Elizabeth R Hauser, PhD<sup>6,37</sup>, Michael A Hauser, PhD<sup>6</sup>, Jennifer Huffman, PhD<sup>38</sup>, Daniel Jacobson, PhD<sup>39</sup>, Jennifer H Lindquist, MS, M Stat<sup>40</sup>, Ravi Madduri, MS<sup>41</sup>, Benjamin McMahon, PhD<sup>42</sup>, David W Oslin, MD<sup>43,44</sup>, Jodie Trafton, PhD<sup>45</sup>, Swapnil Awasthi, MSc<sup>46</sup>, Andrew W Bergen, PhD<sup>47,48</sup>, Wade H Berrettini, MD, PhD<sup>49</sup>, Martin Bohus, MD<sup>50</sup>, Harry Brandt, MD<sup>51,52</sup>, Xiao Chang, PhD<sup>53</sup>, Hsi-Chung Chen, MD, PhD<sup>54</sup>, Wei J Chen, MD, PhD<sup>54,55,56</sup>, Erik D Christensen, MD<sup>57,58</sup>, Steven Crawford, MD<sup>51,52</sup>, Scott Crow, MD<sup>59</sup>, Philibert Duriez, MD<sup>60,61</sup>, Alexis C Edwards, PhD<sup>3</sup>, Fernando Fernández-Aranda, PhD<sup>62</sup>, Manfred M Fichter, MD<sup>63,64</sup>, Hanga Galfalvy, PhD<sup>65,66</sup>, Steven Gallinger, MD<sup>67</sup>, Michael Gandal, PhD<sup>68</sup>, Philip Gorwood, MD, PhD<sup>60,61</sup>, Yiran Guo, PhD<sup>53</sup>, Jonathan D Hafferty, MBChB<sup>11</sup>, Hakon Hakonarson, MD, PhD<sup>53,69</sup>, Katherine A Halmi, MD<sup>70</sup>, Akitoyo Hishimoto, MD, PhD<sup>71</sup>, Sonia Jain, PhD<sup>72</sup>, Stéphane Jamain, PhD<sup>73</sup>, Susana Jiménez-Murcia, PhD<sup>62</sup>, Craig Johnson, PhD<sup>74</sup>, Allan S Kaplan, MD, FRCP(C)<sup>75,76,77</sup>, Walter H Kaye, MD<sup>78</sup>, Pamela K Keel, PhD<sup>79</sup>, James L Kennedy, MD, FRCP(C)<sup>75,76,77</sup>, Minsoo Kim, BS<sup>68</sup>, Kelly L Klump, PhD<sup>80</sup>, Daniel F Levey, PhD<sup>81,82</sup>, Dong Li, PhD<sup>53</sup>, Shih-Cheng Liao, PhD<sup>54</sup>, Klaus Lieb, MD<sup>83</sup>, Lisa Lilienfeld, PhD<sup>84</sup>, Adriana Lori, PhD<sup>85</sup>, Pierre J Magistretti, MD, PhD<sup>86,87</sup>, Christian R Marshall, PhD<sup>88</sup>, James E Mitchell, MD<sup>89</sup>, Richard M Myers, PhD<sup>90</sup>, Satoshi Okazaki, MD, PhD<sup>91</sup>, Ikuo Otsuka, MD, PhD<sup>66,91</sup>, Dalila Pinto, PhD<sup>4,5</sup>, Abigail Powers, PhD, ABPP<sup>85</sup>, Nicolas Ramoz, PhD<sup>61</sup>, Stephan Ripke, MD, PhD<sup>46,92,93</sup>, Stefan Roepke, MD<sup>94</sup>, Vsevolod Rozanov, MD, PhD<sup>95,96</sup>, Stephen W Scherer, PhD, FRSC<sup>97,98</sup>, Christian Schmahl, MD<sup>50</sup>, Marcus Sokolowski, PhD<sup>99</sup>, Anna Starnawska, PhD<sup>100,101,102,103</sup>, Michael Strober, PhD<sup>104,105</sup>, Mei-Hsin Su, PhD<sup>56</sup>, Laura M Thornton, PhD<sup>24</sup>, Janet Treasure, PhD, FRCP<sup>106,107</sup>, Erin B Ware, PhD, MPH<sup>108,109</sup>, Hunna J Watson, PhD<sup>24,110,111</sup>, Stephanie H Witt, PhD<sup>31</sup>, D Blake Woodside, MD<sup>76,77,112,113</sup>, Zeynep Yilmaz, PhD<sup>24,114,115</sup>, Lea Zillich, MSc<sup>31</sup>, Rolf Adolfsson, PhD<sup>116</sup>, Ingrid Agartz, MD, PhD<sup>117,118,119</sup>, Tracy M Air, MSc<sup>120</sup>, Martin Alda, MD<sup>121,122</sup>, Lars Alfredsson, PhD<sup>123,124</sup>, Adebayo Anjorin, MRCPsych<sup>125</sup>, Vivek Appadurai, PhD<sup>126,127</sup>, María Soler Artigas, PhD<sup>128,129,130,131</sup>, Sandra Van der Auwera, PhD<sup>132,133</sup>, M Helena Azevedo, PhD<sup>134</sup>, Nicholas Bass, MRCPsych<sup>135</sup>, Claiton HD Bau, PhD<sup>136,137</sup>, Bernhard T Baune, PhD<sup>138,139</sup>, Frank Bellivier, PhD<sup>140,141,142,143</sup>, Klaus Berger, MD<sup>144</sup>, Joanna M Biernacka, PhD<sup>145</sup>, Tim B Bigdeli, PhD<sup>3,146</sup>, Elisabeth B Binder, PhD<sup>85,147</sup>, Michael Boehnke, PhD<sup>148</sup>, Marco P Boks, PhD<sup>149</sup>, Rosa Bosch, BSc<sup>128,129,150</sup>, David L Braff, MD<sup>151</sup>, Richard Bryant, PhD<sup>152</sup>, Monika Budde, Dipl-Psych<sup>153</sup>, Enda M Byrne, PhD<sup>13,154</sup>, Wiepke Cahn, PhD<sup>155</sup>, Miguel Casas, MD, PhD<sup>128,129,131,150</sup>, Enrique Castelao, MSc<sup>30</sup>, Jorge A Cervilla, MD, PhD<sup>156</sup>, Boris Chaumette, MD, PhD<sup>157,158,159</sup>, Sven Cichon, PhD<sup>160,161,162,163</sup>, Aiden Corvin, PhD<sup>164</sup>, Nicholas Craddock, PhD<sup>165</sup>, David Craig, PhD<sup>166</sup>, Franziska Degenhardt, MD<sup>163</sup>, Srdjan Djurovic, PhD<sup>167,168</sup>, Ayman H Fanous, MD<sup>3,146</sup>, Jerome C Foo, PhD<sup>169</sup>, Andreas J Forstner, MD<sup>160,163,170</sup>, Mark Frye, MD<sup>171</sup>, Justine M Gatt, PhD<sup>14,152</sup>, Pablo V Gejman, MD<sup>172,173</sup>, Ina Giegling, PhD<sup>174</sup>, Hans J Grabe, MD<sup>132,133</sup>, Melissa J Green, PhD<sup>14,175</sup>, Eugenio H Grevet, PhD<sup>176,177</sup>, Maria Grigoriou-Serbanescu, PhD<sup>178</sup>, Blanca Gutierrez, PhD<sup>179</sup>, Jose Guzman-Parra, PhD<sup>180</sup>, Steven P Hamilton, PhD<sup>181</sup>, Marian L Hamshere, PhD<sup>165</sup>, Annette M Hartmann, PhD<sup>174,182</sup>, Joanna Hauser, PhD<sup>183</sup>, Stefanie Heilmann-Heimbach, PhD<sup>163</sup>, Per Hoffmann, PhD<sup>161,162,163</sup>, Marcus Ising, PhD<sup>184</sup>, Ian Jones, PhD<sup>165</sup>, Lisa A Jones, PhD<sup>185</sup>,

1  
 2  
 3 Lina Jonsson, PhD<sup>186</sup>, René S Kahn, MD, PhD<sup>5,187</sup>, John R Kelsoe, MD<sup>151,188</sup>, Kenneth S  
 4 Kendler, MD<sup>3</sup>, Stefan Kloiber, MD<sup>75,76,184</sup>, Karestan C Koenen, PhD<sup>92,189,190</sup>, Manolis Kogevinas,  
 5 PhD<sup>191</sup>, Bettina Konte, MSc<sup>174,182</sup>, Marie-Odile Krebs, MD, PhD<sup>157,158,159</sup>, Mikael Landén, MD,  
 6 PhD<sup>22,192</sup>, Jacob Lawrence, MRCPsych<sup>193</sup>, Marion Leboyer, PhD<sup>194,195,196</sup>, Phil H Lee,  
 7 PhD<sup>92,93,197</sup>, Douglas F Levinson, MD<sup>198</sup>, Calwing Liao, PhD<sup>199,200</sup>, Jolanta Lissowska, PhD<sup>201</sup>,  
 8 Susanne Lucae, PhD<sup>184</sup>, Fermin Mayoral, PhD<sup>180</sup>, Susan L McElroy, MD<sup>202</sup>, Patrick McGrath,  
 9 MD<sup>203</sup>, Peter McGuffin, PhD<sup>8</sup>, Andrew McQuillin, PhD<sup>135</sup>, Divya Mehta, PhD<sup>204,205</sup>, Ingrid Melle,  
 10 MD, PhD<sup>20,206</sup>, Yuri Milaneschi, PhD<sup>207</sup>, Philip B Mitchell, MD<sup>175</sup>, Esther Molina, PhD<sup>208</sup>, Gunnar  
 11 Morken, PhD<sup>209,210</sup>, Preben Bo Mortensen, MD<sup>101,114,127,211</sup>, Bertram Müller-Myhsok, PhD<sup>147,212,213</sup>,  
 12 Caroline Nievergelt, PhD<sup>151</sup>, Vishwajit Nimgaonkar, PhD<sup>214</sup>, Markus M Nöthen, MD<sup>163</sup>, Michael C  
 13 O'Donovan, FRCPsych, PhD<sup>165</sup>, Roel A Ophoff, PhD<sup>68,215</sup>, Michael J Owen, FRCPsych, PhD<sup>165</sup>,  
 14 Carlos Pato, MD, PhD<sup>216,216</sup>, Michele T Pato, MD<sup>217</sup>, Brenda WJH Penninx, PhD<sup>218</sup>, Jonathan  
 15 Pimm, MRCPsych<sup>135</sup>, James B Potash, MD<sup>219</sup>, Robert A Power, PhD<sup>8,220,221</sup>, Martin Preisig,  
 16 MD<sup>30</sup>, Digby Quested, MD<sup>222</sup>, Josep Antoni Ramos-Quiroga, MD, PhD<sup>128,129,131,150</sup>, Andreas Reif,  
 17 MD<sup>223</sup>, Marta Ribasés, PhD<sup>128,129,130,131</sup>, Vanesa Richarte, MD, PhD<sup>128,129,150</sup>, Marcella Rietschel,  
 18 MD<sup>224</sup>, Margarita Rivera, PhD<sup>8,225</sup>, Andrea Roberts, MPH, PhD<sup>226</sup>, Gloria Roberts, PhD<sup>175</sup>, Guy A  
 19 Rouleau, PhD<sup>227,228</sup>, Diego L Rovaris, PhD<sup>229</sup>, Dan Rujescu, MD<sup>174,182</sup>, Cristina Sánchez-Mora,  
 20 PhD<sup>128,129,130,131</sup>, Alan R Sanders, MD<sup>172,173</sup>, Peter R Schofield, PhD, DSc<sup>14,15</sup>, Thomas G  
 21 Schulze, MD<sup>153,169,230,231,232</sup>, Laura J Scott, PhD<sup>148</sup>, Alessandro Serretti, MD<sup>233</sup>, Jianxin Shi,  
 22 PhD<sup>234</sup>, Stanley I Shyn, PhD<sup>235</sup>, Lea Sirignano, MSc<sup>169</sup>, Pamela Sklar, PhD<sup>4,5,236</sup>, Olav B  
 23 Smeland, MD, PhD<sup>20,21</sup>, Jordan W Smoller, MD, ScD<sup>92,190,237</sup>, Edmund J S Sonuga-Barke,  
 24 PhD<sup>238</sup>, Gianfranco Spalletta, MD, PhD<sup>239,240</sup>, John S Strauss, MD<sup>75,76</sup>, Beata Świątkowska,  
 25 PhD<sup>241</sup>, Maciej Trzaskowski, PhD<sup>13</sup>, Ming T Tsuang, PhD<sup>242</sup>, Gustavo Turecki, PhD<sup>243</sup>, Laura  
 26 Vilar-Ribó, BSc<sup>128,131</sup>, John B Vincent, PhD<sup>244</sup>, Henry Völzke, MD<sup>245</sup>, James TR Walters, PhD<sup>165</sup>,  
 27 Cynthia Shannon Weickert, PhD<sup>14,175</sup>, Thomas W Weickert, PhD<sup>14,175</sup>, Myrna M Weissman,  
 28 PhD<sup>246,247</sup>, Leanne M Williams, PhD<sup>248</sup>, Naomi R Wray, PhD<sup>13,205</sup>, Clement C Zai,  
 29 PhD<sup>76,77,92,189,249,250</sup>, Esben Agerbo, DrMedSc<sup>114,211,251</sup>, Anders D Børglum, PhD<sup>100,101,102,103</sup>,  
 30 Gerome Breen, PhD<sup>7,8</sup>, Ditte Demontis, PhD<sup>100,101,102,103</sup>, Annette Erlangsen, PhD<sup>103,252,253,254</sup>,  
 31 Tõnu Esko, PhD<sup>255,256</sup>, Joel Gelernter, MD<sup>81,82</sup>, Stephen J Glatt, PhD<sup>257</sup>, David M Hougaard,  
 32 MD<sup>251,258</sup>, Hai-Gwo Hwu, MD<sup>259</sup>, Po-Hsiu Kuo, PhD<sup>54,56</sup>, Cathryn M Lewis, PhD<sup>8,260</sup>, Qingqin S Li,  
 33 PhD<sup>261</sup>, Chih-Min Liu, MD<sup>54</sup>, Nicholas G Martin, PhD<sup>12</sup>, Andrew M McIntosh, MD<sup>11</sup>, Sarah E  
 34 Medland, PhD<sup>12</sup>, Ole Mors, PhD<sup>251,262</sup>, Merete Nordentoft, MD<sup>251,263</sup>, Catherine M Olsen, PhD<sup>264</sup>,  
 35 David Porteous, PhD<sup>265</sup>, Daniel J Smith, MD, FRCPsych<sup>266</sup>, Eli A Stahl, PhD<sup>4,255,267</sup>, Murray B  
 36 Stein, MD, MPH<sup>268</sup>, Danuta Wasserman, MD, PhD<sup>99</sup>, Thomas Werge, PhD<sup>126,251,269,270</sup>, David C  
 37 Whiteman, MBBS, PhD<sup>264</sup>, Virginia Willour, PhD<sup>271</sup>, the VA Million Veteran Program (MVP), the  
 38 MVP Suicide Exemplar Workgroup, Suicide Working Group of the Psychiatric Genomics  
 39 Consortium, Major Depressive Disorder Working Group of the Psychiatric Genomics  
 40 Consortium, Bipolar Disorder Working Group of the Psychiatric Genomics Consortium,  
 41 Schizophrenia Working Group of the Psychiatric Genomics Consortium, Eating Disorder  
 42 Working Group of the Psychiatric Genomics Consortium, German Borderline Genomics  
 43 Consortium, Hilary Coon, PhD<sup>1,2,272</sup>, Jean C Beckham, PhD<sup>273,274</sup>†, Nathan A Kimbrel,  
 44 PhD<sup>273,274</sup>‡, Douglas M Ruderfer, PhD<sup>9,275,276</sup>‡

45 \* These authors have contributed equally.

46 † Corresponding author

47 ‡ Senior authors

- 1
  - 2
  - 3
  - 4
  - 5
  - 6
  - 7
  - 8
  - 9
  - 10
  - 11
  - 12
  - 13
  - 14
  - 15
  - 16
  - 17
  - 18
  - 19
  - 20
  - 21
  - 22
  - 23
  - 24
  - 25
  - 26
  - 27
  - 28
  - 29
  - 30
  - 31
  - 32
  - 33
  - 34
  - 35
  - 36
  - 37
  - 38
  - 39
  - 40
  - 41
  - 42
  - 43
  - 44
  - 45
  - 46
  - 47
  - 48
  - 49
  - 50
  - 51
  - 52
  - 53
  - 54
  - 55
  - 56
  - 57
  - 58
  - 59
  - 60
- 1 Huntsman Mental Health Institute, Salt Lake City, UT, US
- 2 University of Utah School of Medicine, Department of Psychiatry, Salt Lake City, UT, US
- 3 Virginia Commonwealth University, Department of Psychiatry, Richmond, VA, US
- 4 Icahn School of Medicine at Mount Sinai, Department of Genetics and Genomic Sciences, New York, NY, US
- 5 Icahn School of Medicine at Mount Sinai, Department of Psychiatry, New York, NY, US
- 6 Duke University Medical Center, Duke Molecular Physiology Institute, Durham, NC, USA
- 7 King's College London, National Institute for Health Research (NIHR) Maudsley Biomedical Research Centre at South London and Maudsley NHS Foundation Trust, London, UK
- 8 King's College London, Social Genetic and Developmental Psychiatry Centre, London, UK
- 9 Vanderbilt University Medical Center, Division of Genetic Medicine, Department of Medicine, Vanderbilt Genetics Institute, Nashville, TN, US
- 10 Yale University School of Medicine, Department of Psychiatry, New Haven, CT, USA
- 11 University of Edinburgh, Division of Psychiatry, Edinburgh, UK
- 12 QIMR Berghofer Medical Research Institute, Mental Health and Neuroscience Research Program, Brisbane, QLD, Australia
- 13 The University of Queensland, Institute for Molecular Bioscience, Brisbane, QLD, Australia
- 14 Neuroscience Research Australia, Sydney, NSW, Australia
- 15 University of New South Wales, School of Medical Sciences, Sydney, NSW, Australia
- 16 University of Pennsylvania Perelman School of Medicine, Department of Psychiatry, Philadelphia, PA, US
- 17 Crescenz VAMC, VISN 4 MIRECC, Philadelphia, PA, US
- 18 The University of Queensland, School of Biomedical Sciences, Faculty of Medicine, Brisbane, QLD, Australia
- 19 University of Texas Health Science Center, Department of Psychiatry and Behavioral Sciences, Houston, TX, US
- 20 Oslo University Hospital, Division of Mental Health and Addiction, Oslo, Norway
- 21 University of Oslo, NORMENT, Oslo, Norway
- 22 Karolinska Institutet, Department of Medical Epidemiology and Biostatistics, Stockholm, Sweden
- 23 University of North Carolina at Chapel Hill, Department of Nutrition, Chapel Hill, NC, US
- 24 University of North Carolina at Chapel Hill, Department of Psychiatry, Chapel Hill, NC, US
- 25 Indiana University, Department of Medical & Molecular Genetics, Indianapolis, IN, US
- 26 Indiana University School of Medicine, Biochemistry and Molecular Biology, Indianapolis, IN, US
- 27 Harvard Medical School, Department of Health Care Policy, Boston, MA, US
- 28 Columbia University, Departments of Psychiatry and Radiology, New York, NY, US
- 29 Indiana University School of Medicine, Departments of Psychiatry and Medical and Molecular Genetics, Indianapolis, IN, US
- 30 Lausanne University Hospital and University of Lausanne, Department of Psychiatry, Lausanne, Vaud, Switzerland
- 31 Central Institute of Mental Health, Medical Faculty Mannheim, University of Heidelberg, Department of Genetic Epidemiology in Psychiatry, Mannheim, Germany
- 32 Uniformed University of the Health Sciences, Department of Psychiatry, Bethesda, MD, US
- 33 Duke University Medical Center, Department of Psychiatry and Behavioral Sciences, Durham, NC, USA
- 34 Duke University Medical Center, Durham, NC, USA
- 35 Durham Veterans Affairs Health Care System, Durham, NC, USA
- 36 Miami VA Health Care System, Miami, FL, USA
- 37 Durham Veterans Affairs Health Care System, Cooperative Studies Program Epidemiology Center, Durham, NC, USA

- 1  
2  
3 38 Boston VA Health Care System, Boston, MA, USA  
4 39 Oak Ridge National Laboratory, Oak Ridge, TN, USA  
5 40 Durham Veterans Affairs Health Care System, VA Health Services Research and  
6 Development Center of Innovation to Accelerate Discovery and Practice Transformation,  
7 Durham, NC, USA  
8 41 Argonne National Laboratory, University of Chicago Consortium for Advanced Science and  
9 Engineering, Chicago, IL, USA  
10 42 Los Alamos National Laboratory, Theoretical Division, Los Alamos National Laboratory, Los  
11 Alamos, NM, USA  
12 43 Corporal Michael J. Crescenzo VA Medical Center, VISN 4 Mental Illness Research,  
13 Education, and Clinical Center, Philadelphia, PA, USA  
14 44 Perelman School of Medicine, University of Pennsylvania, Department of Psychiatry,  
15 Philadelphia, PA, USA  
16 45 VA Palo Alto Health Care System, VA Program Evaluation and Resource Center, Palo Alto,  
17 CA, USA  
18 46 Charité - Universitätsmedizin Berlin, Department of Psychiatry and Psychotherapy, Berlin,  
19 Germany  
20 47 BioRealm, LLC, Walnut, CA, US  
21 48 Oregon Research Institute, Eugene, OR, US  
22 49 Perelman School of Medicine at the University of Pennsylvania, Department of Psychiatry,  
23 Center for Neurobiology and Behavior, Philadelphia, PA, US  
24 50 Central Institute of Mental Health, Medical Faculty Mannheim, University of Heidelberg,  
25 Department of Psychosomatic Medicine and Psychotherapy, Mannheim, Germany  
26 51 ERCPATHLIGHT, Baltimore, MD, US  
27 52 University of Maryland St. Joseph Medical Center, Baltimore, MD, US  
28 53 Children's Hospital of Philadelphia, Center for Applied Genomics, Philadelphia, PA, US  
29 54 National Taiwan University Hospital, Department of Psychiatry, Taipei, Taiwan  
30 55 National Health Research Institutes, Center for Neuropsychiatric Research, Miaoli County,  
31 Taiwan  
32 56 National Taiwan University, Institute of Epidemiology and Preventive Medicine, College of  
33 Public Health, Taipei, Taiwan  
34 57 Utah Department of Health and Human Services, Utah Office of the Medical Examiner,  
35 Taylorsville, UT, US  
36 58 University of Utah, Department of Pathology, Salt Lake City, UT, US  
37 59 University of Minnesota, Department of Psychiatry, Minneapolis, MN, US  
38 60 GHU Paris Psychiatrie et Neurosciences, Hôpital Sainte Anne, Paris, France  
39 61 Université Paris Cité, Institute of Psychiatry and Neuroscience of Paris (IPNP), INSERM  
40 U1266, Paris, France  
41 62 University Hospital Bellvitge-IDIBELL and CIBEROBN, Department of Psychiatry, Barcelona,  
42 Spain  
43 63 Ludwig-Maximilians-University (LMU), Department of Psychiatry and Psychotherapy, Munich,  
44 Germany  
45 64 Schön Klinik Roseneck affiliated with the Medical Faculty of the University of Munich (LMU),  
46 Munich, Germany  
47 65 Columbia University, Department of Biostatistics, New York, NY, US  
48 66 Columbia University, Department of Psychiatry, New York, NY, US  
49 67 University of Toronto, Department of Surgery, Faculty of Medicine, Toronto, ON, Canada  
50 68 University of California, Los Angeles, Department of Psychiatry and Biobehavioral Science,  
51 Semel Institute, David Geffen School of Medicine, Los Angeles, CA, US  
52 69 University of Pennsylvania, The Perelman School of Medicine, Philadelphia, PA, US  
53 70 Weill Cornell Medical College, Department of Psychiatry, New York, NY, US  
54  
55  
56  
57  
58  
59  
60

- 1  
2  
3 71 Yokohama City University Graduate School of Medicine, Department of Psychiatry,  
4 Yokohama, Japan  
5 72 University of California San Diego, Biostatistics Research Center, Herbert Wertheim School of  
6 Public Health and Human Longevity Science, La Jolla, CA, US  
7 73 Univ Paris-Est-Créteil, INSERM, IMRB, Translational Neuropsychiatry, Fondation  
8 FondaMental, Créteil, France  
9 74 Eating Recovery Center, Denver, CO, US  
10 75 Centre for Addiction and Mental Health, Toronto, ON, Canada  
11 76 University of Toronto, Department of Psychiatry, Toronto, ON, Canada  
12 77 University of Toronto, Institute of Medical Science, Toronto, ON, Canada  
13 78 University of California San Diego, Department of Psychiatry, San Diego, CA, US  
14 79 Florida State University, Department of Psychology, Tallahassee, FL, US  
15 80 Michigan State University, Department of Psychology, Lansing, MI, US  
16 81 Veterans Affairs Connecticut Healthcare Center, Department of Psychiatry, West Haven, CT,  
17 US  
18 82 Yale University School of Medicine, Division of Human Genetics, Department of Psychiatry,  
19 New Haven, CT, US  
20 83 University Medical Center, Department of Psychiatry and Psychotherapy, Mainz, Germany  
21 84 The Chicago School of Professional Psychology, Washington DC, Department of Clinical  
22 Psychology, Washington, DC, US  
23 85 Emory University School of Medicine, Department of Psychiatry and Behavioral Sciences,  
24 Atlanta, GA, US  
25 86 King Abdullah University of Science and Technology, BESE Division, Thuwal, Saudi Arabia  
26 87 University of Lausanne-University Hospital of Lausanne (UNIL-CHUV), Department of  
27 Psychiatry, Lausanne, Switzerland  
28 88 The Hospital for Sick Children, Department of Paediatric Laboratory Medicine, Toronto, ON,  
29 Canada  
30 89 University of North Dakota School of Medicine and Health Sciences, Department of  
31 Psychiatry and Behavioral Science, Fargo, ND, US  
32 90 HudsonAlpha Institute for Biotechnology, Huntsville, AL, US  
33 91 Kobe University Graduate School of Medicine, Department of Psychiatry, Kobe, Japan  
34 92 Broad Institute, Stanley Center for Psychiatric Research, Cambridge, MA, US  
35 93 Massachusetts General Hospital, Analytical and Translational Genetics Unit, Boston, MA, US  
36 94 Charité - Universitätsmedizin Berlin, Corporate Member of Freie Universität Berlin, Humboldt-  
37 Universität zu Berlin, Berlin Institute of Health, Campus Benjamin Franklin, Department of  
38 Psychiatry, Berlin, Germany  
39 95 Saint-Petersburg State University, Department of Psychology, Saint-Petersburg, Russian  
40 Federation  
41 96 V.M. Bekhterev National Medical Research Center for Psychiatry and Neurology, Department  
42 of Borderline Disorders and Psychotherapy, Saint-Petersburg, Russian Federation  
43 97 The Hospital for Sick Children, Department of Genetics and Genomic Biology, Toronto, ON,  
44 Canada  
45 98 University of Toronto, McLaughlin Center, Toronto, ON, Canada  
46 99 Karolinska Institutet, National Centre for Suicide Research and Prevention of Mental Ill-Health  
47 (NASP), LIME, Stockholm, Sweden  
48 100 Aarhus University, Centre for Genomics and Personalized Medicine, CGPM, Aarhus,  
49 Denmark  
50 101 Aarhus University, Centre for Integrative Sequencing, iSEQ, Aarhus, Denmark  
51 102 Aarhus University, Department of Biomedicine, Aarhus, Denmark  
52 103 Aarhus University, The Lundbeck Foundation Initiative for Integrative Psychiatric Research,  
53 iPSYCH, Aarhus, Denmark  
54  
55  
56  
57  
58  
59  
60

- 1  
2  
3 104 University of California Los Angeles, David Geffen School of Medicine, Los Angeles, LA, US  
4 105 University of California Los Angeles, Department of Psychiatry and Biobehavioral Science,  
5 Semel Institute for Neuroscience and Human Behavior, Los Angeles, LA, US  
6 106 King's College London, Institute of Psychiatry, Psychology and Neuroscience, Department of  
7 Psychological Medicine, London, UK  
8 107 King's College London and South London and Maudsley National Health Service Foundation  
9 Trust, National Institute for Health Research Biomedical Research Centre, London, UK  
10 108 University of Michigan, Population Studies Center, Institute for Social Research, Ann Arbor,  
11 MI, US  
12 109 University of Michigan, Survey Research Center, Institute for Social Research, Ann Arbor,  
13 MI, US  
14 110 Curtin University, School of Psychology, Perth, Western Australia, Australia  
15 111 The University of Western Australia, Division of Paediatrics, Perth, Western Australia,  
16 Australia  
17 112 University Health Network, Centre for Mental Health, Toronto, ON, Canada  
18 113 University Health Network, Program for Eating Disorders, Toronto, ON, Canada  
19 114 Aarhus University, National Centre for Register-Based Research, Aarhus, Denmark  
20 115 University of North Carolina at Chapel Hill, Department of Genetics, Chapel Hill, NC, US  
21 116 Umeå University Medical Faculty, Department of Clinical Sciences, Psychiatry, Umeå,  
22 Sweden  
23 117 Diakonhjemmet Hospital, Department of Psychiatric Research, Oslo, Norway  
24 118 Karolinska Institutet, Department of Clinical Neuroscience, Centre for Psychiatry Research,  
25 Stockholm, Sweden  
26 119 University of Oslo, NORMENT, Institute of Clinical Medicine, Oslo, Norway  
27 120 University of Adelaide, Discipline of Psychiatry, Adelaide, SA, Australia  
28 121 Dalhousie University, Department of Psychiatry, Halifax, NS, Canada  
29 122 National Institute of Mental Health, Klecany, CZ  
30 123 Karolinska Institutet, Department of Clinical Neuroscience, Stockholm, Sweden  
31 124 Karolinska Institutet, Inst of Environmental Medicine, Stockholm, Sweden  
32 125 Berkshire Healthcare NHS Foundation Trust, Psychiatry, Bracknell, UK  
33 126 Copenhagen University Hospital, Institute of Biological Psychiatry, Copenhagen Mental  
34 Health Services, Copenhagen, Denmark  
35 127 iPSYCH, The Lundbeck Foundation Initiative for Integrative Psychiatric Research,  
36 Copenhagen, Denmark  
37 128 Hospital Universitari Vall d'Hebron, Department of Psychiatry, Barcelona, Spain  
38 129 Instituto de Salud Carlos III, Biomedical Network Research Centre on Mental Health  
39 (CIBERSAM), Madrid, Spain  
40 130 University of Barcelona, Department of Genetics, Microbiology & Statistics, Barcelona, Spain  
41 131 Vall d'Hebron Research Institute (VHIR), Universitat Autònoma de Barcelona, Psychiatric  
42 Genetics Unit, Group of Psychiatry, Mental Health and Addiction,, Barcelona, Spain  
43 132 University Medicine Greifswald, Department of Psychiatry and Psychotherapy, Greifswald,  
44 Mecklenburg-Vorpommern, Germany  
45 133 German Centre for Neurodegenerative Diseases (DZNE), Partner Site Rostock/Greifswald,  
46 Greifswald, Mecklenburg-Vorpommern, Germany  
47 134 University of Coimbra, Department of Psychiatry, Coimbra, Portugal  
48 135 University College London, Division of Psychiatry, London, UK  
49 136 Hospital de Clínicas de Porto Alegre, Laboratory of Developmental Psychiatry, Porto Alegre,  
50 RS, Brazil  
51 137 Universidade Federal do Rio Grande do Sul, Department of Genetics, Porto Alegre, RS,  
52 Brazil  
53 138 University of Melbourne, Department of Psychiatry, Melbourne Medical School, Melbourne,  
54  
55  
56  
57  
58  
59  
60

## Australia

- 139 University of Münster, Department of Psychiatry, Münster, Germany
- 140 Assistance Publique - Hôpitaux de Paris, Department of Psychiatry and Addiction Medicine, Paris, France
- 141 FondaMental Foundation, Paris Bipolar and TRD Expert Centres, Paris, France
- 142 INSERM, UMR-S1144 Team 1 : Biomarkers of relapse and therapeutic response in addiction and mood disorders, Paris, France
- 143 Université Paris Cité, Psychiatry, Paris, France
- 144 University of Münster, Institute of Epidemiology and Social Medicine, Münster, Nordrhein-Westfalen, Germany
- 145 Mayo Clinic, Health Sciences Research, Rochester, MN, US
- 146 State University of New York Downstate Medical Center, Department of Psychiatry and Behavioral Sciences, New York, NY, US
- 147 Max Planck Institute of Psychiatry, Department of Translational Research in Psychiatry, Munich, Germany
- 148 University of Michigan, Center for Statistical Genetics and Department of Biostatistics, Ann Arbor, MI, US
- 149 UMC Utrecht Brain Center, Psychiatry, Utrecht, Netherlands
- 150 Universitat Autònoma de Barcelona, Department of Psychiatry and Legal Medicine, Barcelona, Spain
- 151 University of California San Diego, Department of Psychiatry, La Jolla, CA, US
- 152 University of New South Wales, School of Psychology, Sydney, NSW, Australia
- 153 University Hospital, LMU Munich, Institute of Psychiatric Phenomics and Genomics (IPPG), Munich, Germany
- 154 The University of Queensland, Child Health Research Centre, Brisbane, QLD, Australia
- 155 UMC Utrecht Hersencentrum Rudolf Magnus, Department of Psychiatry, Utrecht, Netherlands
- 156 University of Granada, Mental Health Unit, Department of Psychiatry, Faculty of Medicine, Granada University Hospital Complex, Granada, Spain
- 157 CNRS GDR 3557, Institut de Psychiatrie, Paris, France
- 158 GHU Paris Psychiatrie et Neurosciences, Department of Evaluation, Prevention and Therapeutic innovation, Paris, France
- 159 Université de Paris, Institute of Psychiatry and Neuroscience of Paris (IPNP), INSERM U1266, Team Pathophysiology of psychiatric diseases, Paris, France
- 160 Research Centre Jülich, Institute of Neuroscience and Medicine (INM-1), Jülich, Germany
- 161 University Hospital Basel, Institute of Medical Genetics and Pathology, Basel, Switzerland
- 162 University of Basel, Department of Biomedicine, Basel, Switzerland
- 163 University of Bonn, School of Medicine & University Hospital Bonn, Institute of Human Genetics, Bonn, Germany
- 164 Trinity College Dublin, Neuropsychiatric Genetics Research Group, Dept of Psychiatry and Trinity Translational Medicine Institute, Dublin, Ireland
- 165 Cardiff University, Medical Research Council Centre for Neuropsychiatric Genetics and Genomics, Division of Psychological Medicine and Clinical Neurosciences, Cardiff, UK
- 166 University of Southern California, Department of Translational Genomics, Pasadena, CA, US
- 167 Oslo University Hospital, Department of Medical Genetics, Oslo, Norway
- 168 University of Bergen, NORMENT, KG Jebsen Centre for Psychosis Research, Department of Clinical Science, Bergen, Norway
- 169 Central Institute of Mental Health, Medical Faculty Mannheim, Heidelberg University, Department of Genetic Epidemiology in Psychiatry, Mannheim, Germany
- 170 University of Marburg, Centre for Human Genetics, Marburg, Germany
- 171 Mayo Clinic, Department of Psychiatry & Psychology, Rochester, MN, US

- 1  
2  
3 172 NorthShore University HealthSystem, Department of Psychiatry and Behavioral Sciences,  
4 Evanston, IL, US  
5 173 University of Chicago, Department of Psychiatry and Behavioral Neuroscience, Chicago, IL,  
6 US  
7 174 Medical University of Vienna, Comprehensive Center for Clinical Neurosciences and Mental  
8 Health, Vienna, Austria  
9 175 University of New South Wales, School of Psychiatry, Sydney, NSW, Australia  
10 176 Hospital de Clínicas de Porto Alegre, ADHD Outpatient Program, Adult Division, Porto  
11 Alegre, RS, Brazil  
12 177 Universidade Federal do Rio Grande do Sul, Department of Psychiatry, Porto Alegre, RS,  
13 Brazil  
14 178 Alexandru Obregia Clinical Psychiatric Hospital, Biometric Psychiatric Genetics Research  
15 Unit, Bucharest, Romania  
16 179 University of Granada, Department of Psychiatry, Faculty of Medicine and Biomedical  
17 Research Centre (CIBM), Granada, Spain  
18 180 University Regional Hospital. Biomedicine Institute (IBIMA), Mental Health Department,  
19 Málaga, Spain  
20 181 Kaiser Permanente Northern California, Psychiatry, San Francisco, CA, US  
21 182 Medical University of Vienna, Department of Psychiatry and Psychotherapy, Vienna, Austria  
22 183 Poznan University of Medical Sciences, Psychiatric Genetics, Department of Psychiatry,  
23 Poznan, Poland  
24 184 Max Planck Institute of Psychiatry, Munich, Germany  
25 185 University of Worcester, Department of Psychological Medicine, Worcester, UK  
26 186 University of Gothenburg, Department of Psychiatry and Neuroscience, Gothenburg, Sweden  
27 187 UMC Utrecht Brain Center Rudolf Magnus, Psychiatry, Utrecht, Netherlands  
28 188 University of California San Diego, Institute for Genomic Medicine, La Jolla, CA, US  
29 189 Harvard TH Chan School of Public Health, Department of Epidemiology, Boston, MA, US  
30 190 Massachusetts General Hospital, Department of Psychiatry, Boston, MA, US  
31 191 Center for Research in Environmental Epidemiology (CREAL), Barcelona, Spain  
32 192 University of Gothenburg, Institute of Neuroscience and Physiology, Gothenburg, Sweden  
33 193 North East London NHS Foundation Trust, Psychiatry, Ilford, UK  
34 194 Univ Paris Est Créteil, INSERM, AP-HP, IMRB, Translational Neuropsychiatry, DMU  
35 IMPACT, FHU ADAPT, Fondation FondaMental, Créteil, France  
36 195 INSERM, Paris, France  
37 196 Université Paris Est, Faculté de Médecine, Créteil, France  
38 197 Massachusetts General Hospital, Psychiatric and Neurodevelopmental Genetics Unit,  
39 Boston, MA, US  
40 198 Stanford University, Psychiatry & Behavioral Sciences, Stanford, CA, US  
41 199 Broad Institute of MIT and Harvard, Stanley Center for Psychiatric Research, Cambridge,  
42 MA, US  
43 200 Massachusetts General Hospital, Analytical and Translational Genetics Unit, Cambridge,  
44 MA, US  
45 201 Maria Skłodowska-Curie National Research Institute of Oncology, Warsaw, Poland  
46 202 Lindner Center of HOPE, Research Institute, Mason, OH, US  
47 203 Columbia University College of Physicians and Surgeons, Psychiatry, New York, NY, US  
48 204 Queensland University of Technology, School of Psychology and Counseling, Brisbane,  
49 QLD, Australia  
50 205 The University of Queensland, Queensland Brain Institute, Brisbane, QLD, Australia  
51 206 University of Oslo, Institute of Clinical Medicine, Division of Mental Health and Addiction,  
52 Oslo, Norway  
53 207 Amsterdam UMC, Vrije Universiteit and GGZ inGeest, Department of Psychiatry,  
54  
55  
56  
57  
58  
59  
60



1  
2  
3 Amsterdam, Netherlands

4 <sup>208</sup> University of Granada, Department of Nursing, Faculty of Health Sciences and Biomedical  
5 Research Centre (CIBM), Granada, Spain

6 <sup>209</sup> Norwegian University of Science and Technology - NTNU, Mental Health, Faculty of  
7 Medicine and Health Sciences, Trondheim, Norway

8 <sup>210</sup> St Olavs University Hospital, Psychiatry, Trondheim, Norway

9 <sup>211</sup> Aarhus University, Centre for Integrated Register-based Research, Aarhus, Denmark

10 <sup>212</sup> Munich Cluster for Systems Neurology (SyNergy), Munich, Germany

11 <sup>213</sup> University of Liverpool, Liverpool, UK

12 <sup>214</sup> University of Pittsburgh, Psychiatry and Human Genetics, Pittsburgh, PA, US

13 <sup>215</sup> Erasmus University Medical Center, Psychiatry, Rotterdam, Netherlands

14 <sup>216</sup> Rutgers University, RWJMS, NJMS, UBHC, Piscataway, NJ, US

15 <sup>217</sup> Rutgers University, RWJMS, NJMS, Piscataway, NJ, US

16 <sup>218</sup> Amsterdam UMC, Vrije Universiteit, Department of Psychiatry and Amsterdam

17 Neuroscience, Amsterdam, Netherlands

18 <sup>219</sup> Johns Hopkins University School of Medicine, Psychiatry, Baltimore, MD, US

19 <sup>220</sup> BioMarin Pharmaceuticals, Genetics, London, UK

20 <sup>221</sup> University of Oxford, St Edmund Hall, Oxford, UK

21 <sup>222</sup> University of Oxford, Department of Psychiatry, Oxford, UK

22 <sup>223</sup> University Hospital Frankfurt, Department of Psychiatry, Psychosomatic Medicine and  
23 Psychotherapy, Frankfurt, Germany

24 <sup>224</sup> Central Institute of Mental Health, Medical Faculty Mannheim, Heidelberg University,  
25 Department of Genetic Epidemiology in Psychiatry, Mannheim, Baden-Württemberg, Germany

26 <sup>225</sup> University of Granada, Department of Biochemistry and Molecular Biology II and Institute of  
27 Neurosciences, Biomedical Research Centre (CIBM), Granada, Spain

28 <sup>226</sup> Harvard TH Chan School of Public Health, Department of Environmental Health, Boston, MA,  
29 US

30 <sup>227</sup> McGill University, Faculty of Medicine, Department of Neurology and Neurosurgery,  
31 Montreal, QC, Canada

32 <sup>228</sup> Montreal Neurological Institute and Hospital, Montreal, QC, Canada

33 <sup>229</sup> Instituto de Ciencias Biomedicas Universidade de Sao Paulo, Department of Physiology and  
34 Biophysics, São Paulo, SP, Brazil

35 <sup>230</sup> Johns Hopkins University School of Medicine, Department of Psychiatry and Behavioral  
36 Sciences, Baltimore, MD, US

37 <sup>231</sup> National Institute of Mental Health, Human Genetics Branch, Intramural Research Program,  
38 Bethesda, MD, US

39 <sup>232</sup> University Medical Center Göttingen, Department of Psychiatry and Psychotherapy,  
40 Göttingen, Germany

41 <sup>233</sup> University of Bologna, Department of Biomedical and NeuroMotor Sciences, Bologna, Italy

42 <sup>234</sup> National Cancer Institute, Division of Cancer Epidemiology and Genetics, Bethesda, MD, US

43 <sup>235</sup> Kaiser Permanente Washington, Behavioral Health Services, Seattle, WA, US

44 <sup>236</sup> Icahn School of Medicine at Mount Sinai, Department of Neuroscience, New York, NY, US

45 <sup>237</sup> Massachusetts General Hospital, Psychiatric and Neurodevelopmental Genetics Unit  
46 (PNGU), Boston, MA, US

47 <sup>238</sup> King's College London, Institute of Psychology, Psychiatry & Neuroscience, London, UK

48 <sup>239</sup> Baylor College of Medicine, Houston, Menninger Department of Psychiatry and Behavioral  
49 Sciences, Houston, TX, US

50 <sup>240</sup> IRCCS Santa Lucia Foundation, Rome, Laboratory of Neuropsychiatry, Rome, Italy

51 <sup>241</sup> Nofer Institute of Occupational Medicine, Department of Environmental Epidemiology, Lodz,  
52 Poland

53 <sup>242</sup> University of California, San Diego, Center for Behavioral Genomics, Department of  
54  
55  
56  
57  
58  
59  
60

1  
2  
3  
4  
5  
6  
7  
8  
9  
10  
11  
12  
13  
14  
15  
16  
17  
18  
19  
20  
21  
22  
23  
24  
25  
26  
27  
28  
29  
30  
31  
32  
33  
34  
35  
36  
37  
38  
39  
40  
41  
42  
43  
44  
45  
46  
47  
48  
49  
50  
51  
52  
53  
54  
55  
56  
57  
58  
59  
60

Psychiatry, La Jolla, CA, US

<sup>243</sup> McGill University, Department of Psychiatry, Montreal, QC, Canada

<sup>244</sup> Centre for Addiction and Mental Health, Molecular Brain Science, Toronto, ON, Canada

<sup>245</sup> University Medicine Greifswald, Institute for Community Medicine, Greifswald, Mecklenburg-Vorpommern, Germany

<sup>246</sup> Columbia University College of Physicians and Surgeons, New York, NY, US

<sup>247</sup> New York State Psychiatric Institute, Division of Translational Epidemiology, New York, NY, US

<sup>248</sup> Stanford University, Department of Psychiatry and Behavioral Sciences, Stanford, CA, US

<sup>249</sup> Centre for Addiction and Mental Health, Molecular Brain Science, Campbell Family Mental Health Research Institute, Toronto, ON, Canada

<sup>250</sup> University of Toronto, Laboratory Medicine and Pathobiology, Toronto, ON, Canada

<sup>251</sup> iPSYCH, The Lundbeck Foundation Initiative for Integrative Psychiatric Research, Aarhus, Denmark

<sup>252</sup> Australian National University, Center of Mental Health Research, Canberra, Australia

<sup>253</sup> Johns Hopkins Bloomberg School of Public Health, Department of Mental Health, Baltimore, MD, US

<sup>254</sup> Mental Health Centre Copenhagen, Danish Research Institute for Suicide Prevention, Copenhagen, Denmark

<sup>255</sup> Broad Institute, Program in Medical and Population Genetics, Cambridge, MA, US

<sup>256</sup> University of Tartu, Estonian Genome Center, Institute of Genomics, Tartu, Estonia

<sup>257</sup> SUNY Upstate Medical University, Department of Psychiatry and Behavioral Sciences, Syracuse, NY, US

<sup>258</sup> Statens Serum Institut, Center for Neonatal Screening, Department for Congenital Disorders, Copenhagen, Denmark

<sup>259</sup> National Taiwan University Hospital and College of Medicine, Department of Psychiatry, Taipei, Taiwan

<sup>260</sup> King's College London, Department of Medical & Molecular Genetics, London, UK

<sup>261</sup> Janssen Research & Development, LLC, Neuroscience, Titusville, NJ, US

<sup>262</sup> Aarhus University Hospital, Risskov, Psychosis Research Unit, Aarhus, Denmark

<sup>263</sup> Copenhagen University Hospital, Mental Health Center Copenhagen, Copenhagen, Denmark

<sup>264</sup> QIMR Berghofer Medical Research Institute, Department of Population Health, Brisbane, QLD, Australia

<sup>265</sup> University of Edinburgh, Institute for Genetics and Molecular Medicine, Edinburgh, UK

<sup>266</sup> University of Edinburgh, Centre for Clinical Brain Sciences, Edinburgh, UK

<sup>267</sup> Regeneron Genetics Center, Analytical Genetics and Data Science, Tarrytown, NY, US

<sup>268</sup> University of California San Diego, Department of Psychiatry and School of Public Health, La Jolla, CA, US

<sup>269</sup> University of Copenhagen, Department of Clinical Medicine, Copenhagen, Denmark

<sup>270</sup> University of Copenhagen, Lundbeck Foundation GeoGenetics Centre, GLOBE Institute,, Copenhagen, Denmark

<sup>271</sup> University of Iowa, Department of Psychiatry, Iowa City, IA, US

<sup>272</sup> University of Utah School of Medicine, Biomedical Informatics, Salt Lake City, UT, US

<sup>273</sup> Durham Veterans Affairs Health Care System, VISN 6 Mid-Atlantic Mental Illness Research, Education, and Clinical Center, Durham, NC, USA

<sup>274</sup> Duke University School of Medicine, Department of Psychiatry and Behavioral Sciences, Durham, NC, USA

<sup>275</sup> Vanderbilt University Medical Center, Department of Biomedical Informatics, Nashville, TN, US

<sup>276</sup> Vanderbilt University Medical Center, Department of Psychiatry and Behavioral Sciences, Nashville, TN, US

1  
2  
3 **Previous presentation:** World Congress of Psychiatric Genetics, 2022, Florence, Italy  
4

5 **Address for reprint:** Corresponding author, Anna R. Docherty, Department of Psychiatry,  
6 University of Utah School of Medicine, 501 Chipeta Way, Salt Lake City, Utah 84110, USA, tel.  
7 +1 763 516 7367. Email: [anna.docherty@utah.edu](mailto:anna.docherty@utah.edu).  
8  
9

10 **Disclosures:** Dr. Qingqin Li is employed by Janssen Pharmaceuticals. Dr. Eli Stahl is a full-time  
11 employee of the Regeneron Genetics Center, a subsidiary of Regeneron Pharmaceuticals Inc.  
12 All other authors have no financial relationships with commercial interests.  
13  
14

15 **Acknowledgements:** This work was supported by the National Institute of Mental Health  
16 (R01MH123619, R01MH123489, R01MH099134, K01MH109765, R01MH116269,  
17 R01MH121455). This research is also based on data from the U.S. Department of Veterans  
18 Affairs (VA) Million Veteran Program (MVP) program and was supported by Award  
19 #I01CX001729 from the Clinical Science Research and Development Service of the Veterans  
20 Health Administration Office of Research and Development. J.C. Beckham was also supported  
21 by a Senior Research Career Scientist Award (#IK6BX003777) from CSR&D. Research  
22 reported in this publication was supported by NIGMS of the National Institutes of Health under  
23 award number T32GM007347 (J.K.). This work was also supported by the Brain & Behavior  
24 Research Foundation/NARSAD Young Investigator Awards No. 29551 to N. Mullins, No. 28686  
25 to A. Shabalin, and No. 28132 to E. DiBlasi. Work was supported by the Huntsman Mental  
26 Health Institute, the American Foundation for Suicide Prevention (A. Docherty, A. Shabalin, E.  
27 DiBlasi, A. Bakian, H. Coon), and the Clark Tanner Research Foundation. This work was also  
28 supported by research funding from Janssen Research & Development, LLC to University of  
29 Utah. Data from the Utah cohort is available through the Utah Population Database, which is  
30 partially supported by the Huntsman Cancer Institute and award number P30CA42014 from the  
31 National Cancer Institute. Several statistical analyses were carried out on the Mount Sinai high  
32 performance computing cluster (<http://hpc.mssm.edu>), which is supported by the Office of  
33 Research Infrastructure of the National Institutes of Health (Grant Nos. S10OD018522 and  
34 S10OD026880). This work was also conducted in part using the resources of the Advanced  
35 Computing Center for Research and Education at Vanderbilt University, Nashville, TN and the  
36 Huntsman Mental Health Institute at the University of Utah School of Medicine, Salt Lake City,  
37 UT. This publication does not represent the views of the Department of Veteran Affairs or the  
38 United States Government. We also thank and acknowledge MVP, the MVP Suicide Exemplar  
39 Workgroup, and the ISGC for their contributions to this manuscript. A complete listing of  
40 contributors from the MVP, MVP Suicide Exemplar Workgroup, and the ISGC is provided in the  
41 Supplementary Materials.  
42  
43  
44  
45  
46  
47  
48  
49  
50  
51  
52  
53  
54  
55  
56  
57  
58  
59  
60

## Abstract

Objective: Suicidal behavior is heritable and a major cause of death worldwide. Two large-scale genome-wide association studies (GWAS) recently discovered and cross-validated genome-wide significant (GWS) loci for suicide attempt (SA). The current study leveraged the genetic cohorts from both studies to conduct the largest GWAS meta-analysis of SA to date. Multi-ancestry and admixture-specific meta-analyses were conducted within groups of significant African, East Asian, and European ancestry admixtures.

Methods: This study was comprised of 22 cohorts, including 43,871 SA cases and 915,025 ancestry-matched controls. Analytical methods across multi-ancestry and individual ancestry admixtures included inverse variance-weighted fixed effects meta-analyses, followed by gene, gene-set, tissue-set, and drug-target enrichment, as well as summary-data-based Mendelian Randomization with brain eQTL data, phenome-wide genetic correlation, and genetic causal proportion analyses.

Results: Multi-ancestry and European ancestry admixture GWAS meta-analyses identified 12 risk loci at  $p < 5 \times 10^{-8}$ . These loci were mostly intergenic and implicated *DRD2*, *SLC6A9*, *FURIN*, *NLGN1*, *SOX5*, *PDE4B*, and *CACNG2*. The multi-ancestry SNP-based heritability estimate of SA was 5.7% on the liability scale ( $SE = 0.003$ ,  $p = 5.7 \times 10^{-80}$ ). Significant brain tissue gene expression and drug set enrichment was observed. There was shared genetic variation of SA with ADHD, smoking, and risk tolerance after conditioning SA on both major depressive disorder and post-traumatic stress disorder. Genetic causal proportion analyses implicated shared genetic risk for specific health factors.

Conclusions: This multi-ancestry analysis of suicide attempt identified several loci contributing to risk, and establishes significant shared genetic covariation with clinical phenotypes. These findings provide insight into genetic factors associated with suicide attempt across major ancestry admixtures, in veteran and civilian populations, and in attempt versus death.

## Introduction

Suicide was the fourth leading cause of death among 15–29-year-olds in 2019, accounting for more than 700,000 deaths worldwide (1). Suicide attempts (SA; defined as self-injurious behaviors with an intent to die) are even more common (2-4). Suicide attempts are strongly associated with psychiatric conditions, poor quality of life, traumatic experiences, and social and economic burden (1), and are the single strongest predictor of future suicide death (5).

Heritability estimates for suicidal thoughts and behaviors from twin and family studies range from 30-55% (6), and recent large-scale genome-wide association studies (GWAS) have yielded promising and replicable results. The International Suicide Genetics Consortium (ISGC; total  $N=549,743$ ; 29,782 cases) identified two loci reaching genome-wide significance for suicide attempt in individuals of primarily European ancestry admixtures, on chromosomes 6 (index SNP rs71557378,  $p = 1.97 \times 10^{-8}$ ) and 7 (index SNP rs62474683,  $p = 1.91 \times 10^{-10}$ ) (7). The intergenic locus on chromosome 7 remained significant after conditioning on psychiatric disorders, and was independently replicated ( $p = 3.27 \times 10^{-3}$ ) (8) within the Million Veteran Program (MVP) cohort (9). The MVP cohort GWAS of SA (total  $N=409,153$ ; 14,089 cases) resulted in two genome-wide significant multi-ancestry loci, on chromosomes 20 (index SNP rs56817213,  $p = 3.64 \times 10^{-9}$ ) and 1 (index SNP rs72730526,  $p = 3.69 \times 10^{-8}$ ) (8). A top signal identified at the *Dopamine Receptor D2* locus ( $p = 1.77 \times 10^{-7}$ ) also showed moderate association in the ISGC GWAS ( $p = 7.97 \times 10^{-4}$ ) (7).

These studies established the complexity of the common variant genetic architecture of suicide attempt and demonstrated the critical role of sample size for discovering novel, replicable risk loci for suicide phenotypes through GWAS (10). Together, these GWAS suggested that larger studies will identify additional genomic risk loci and refine genetic risk metrics.

The objective of the current study was to conduct a meta-analysis of the ISGC and MVP studies (total  $N=958,896$ ; 43,871 suicide attempt and suicide death cases). Moreover, there is considerable need to increase the diversity and generalizability of GWAS data (11). Combining all ISGC and MVP cohorts allowed for the largest GWAS meta-analyses of European, African, and East Asian ancestry admixtures to date. We also tested for gene set enrichment and functional follow-up specific to these primary ancestral admixtures.

## Methods

### GWAS Cohorts and Phenotype Ascertainment

#### *The International Suicide Genetics Consortium (ISGC) Cohort*

The ISGC analyses included 29,782 suicide attempt (SA) and/or suicide death (SD) cases and 519,961 controls from 18 cohorts (15 SA, 2 SD, and 1 both), 12 of which were ascertained clinically for the purpose of studying psychiatric disorders. Details about the specific cohorts have been described previously (7) and cohort references and ascertainment methods are summarized in Supplementary Table S1. Twelve SA cohorts ascertained information on SA via in-person structured psychiatric interviews conducted by trained clinicians/researchers, two SA cohorts used self-report, and two SA cohorts used ICD codes or hospital records. All interviews and self-report items asked explicitly about SA rather than self-harm (which would also include non-suicidal self-injury). ICD codes were coupled with information from emergency room settings, reason for contact information, and attempt methods that were mined from physician

notes, in order to maximize evidence that suicidal intent was present. For the cohorts using interviews or self-report to ascertain SA information, the SA was non-fatal. An additional two cohorts explicitly ascertained cases of suicide death (SD). The majority of SD cases were ascertained from the Utah Office of the Medical Examiner (Utah  $n = 4,692$ ). In these cases, suicide cause-of-death determination results from a detailed investigation of the scene of the death and circumstances of death, determination of medical conditions by full autopsy, review of medical and other public records concerning the case, interviews with survivors, and standard toxicology workups (12). Suicide determination is traditionally conservative due to its impact on surviving relatives. In the 746 suicide deaths from Kobe, Japan, autopsies on suicides were performed and cause of death was determined through discussion with the Medical Examiner's Office and the Division of Legal Medicine in the Kobe University Graduate School of Medicine. The Columbia University cohort of both SA and SD included 317 suicide deaths that were determined by psychological autopsy and the coroner or medical examiner. A psychological autopsy is a method of determining the psychological factors that may have contributed to a death, considering additional information from family members, friends, acquaintances, medical records and other relevant documents to better characterize a death of uncertain cause, including suspected suicides.

### *The Million Veteran Program (MVP) Cohort*

MVP recruitment and study procedures have been described previously (8) and included veterans providing a blood sample, consenting to genetic analyses and the linking of one's genetic information to the VA's electronic health records (EHR), and completing two optional surveys (9, 13). SA was defined as an act of deliberate self-harm with the intent to cause death that occurred at any point over the lifetime. Briefly, cases were defined as veterans with a documented history of SA in the EHR ( $N=14,089$ ) and controls were defined as veterans with no documented history of suicidal thoughts or behaviors in the EHR ( $N=395,064$ ). VA EHR sources were utilized to create a SA phenotype using: (a) diagnostic codes for intentional self-harm; (b) suicidal behavior reports from the VA's Suicide Prevention Applications Network (SPAN) database; and (c) mental health survey responses from the VA's Mental Health Assistant database indicating a history of attempting suicide. Veterans who had a history of suicidal ideation but no SA were excluded from analysis. For all ISGC and MVP cohorts, it remains undetermined which individuals with SA may have later died by suicide. Details of sample sizes by genetic ancestry admixture for the ISGC and MVP cohorts are presented in Table 1.

### **Genotyping, quality control, and imputation**

Details of genotyping, quality control (QC), and imputation for the ISGC and MVP data sets have been described previously (7, 8). In the ISGC analyses, genotyping was performed locally by each of the research teams using comparable procedures<sup>8</sup> (details per cohort are available in the Table S1). Standard parameters were used to retain individuals and SNPs after quality control for missingness, relatedness, and Hardy-Weinberg equilibrium. Genetic ancestry was defined by the contributing cohorts, and we include all ascertainment, QC, and analysis details of the ISGC and MVP cohorts in Supplemental Table 1. Imputation was performed using the largest available ancestrally matched reference panels, either from 1000 Genomes or the Haplotype Reference Consortium. We confirmed the comparability of imputation across the cohorts by comparing the final set of SNPs in the meta-analysis, including the number of cohorts in which they were present, and the INFO scores across cohorts and within ancestral admixture groups. Sample overlap and/or cryptic relatedness across cohorts was assessed and corrected for using the meta-analytic tools described below. Eight of the cohorts had high control:case ratios (using an arbitrary cut-off of  $>15:1$ ). In these cases, the LD Score regression

(14) (LDSC) attenuation ratio statistics were examined for evidence of population stratification or uncontrolled type 1 error in the cohort. For any evidence of inflation, the intercept was used to adjust the SE of the summary statistics.

### **GWAS meta-analysis of suicide attempt**

For both the ISGC and MVP cohorts, the initial GWAS analysis was conducted within genetic ancestral admixture groups. For the ISGC meta-analysis, GWAS were conducted within study and genetic ancestry admixture group, covarying for at least 10 principal components of genetic ancestry, genomic relatedness matrices or factors capturing site of recruitment or genotyping batch, as required (7). For the MVP cohort, ancestry was assigned for four mutually exclusive ancestral groups utilizing a previously defined approach harmonizing genetic ancestry admixture and self-identified ancestry grouping (HARE) (15). Subsequent MVP GWAS analyses were performed within ancestral admixture group using PLINK2 (16), covarying for genetic ancestry principal components, age, and sex.

A multi-ancestry meta-analysis of SA GWAS summary statistics was conducted using an inverse variance-weighted fixed effects model (standard error) in METAL (17), assuming shared risk effects across ancestry admixtures. SNPs with a mean weighted minor allele frequency of <1%, mean weighted imputation INFO score <0.6 or SNPs present in <80% of the total effective sample size were removed to ensure adequate statistical power at every variant included. Ancestry admixture-specific GWAS meta-analyses were conducted with cohorts of significant European (EUR), African (AFR), and East Asian (EAS) ancestry admixtures using the same procedures. Only one primary ancestral admixture, Hispanic/Latino (LAT), was limited to a single cohort and thus could not be meta-analyzed. Inflation of test statistics due to polygenicity or cryptic relatedness were assessed using the LDSC attenuation ratio ((LDSC intercept - 1)/(mean of association chi-square statistics - 1)). Resulting genome-wide significant (GWS) loci were defined as those with  $p < 5 \times 10^{-8}$  with LD  $r^2 > 0.1$ , within a 3,000 kb window, based on the structure of the Haplotype Reference Consortium (HRC) EUR reference panel for the multi-ancestry meta-analysis, or the HRC ancestry-appropriate reference panel otherwise. GWS loci for SA were examined for heterogeneity across cohorts via the  $I^2$  inconsistency metric and forest plots.

### **Estimation of heritability and genetic association with other disorders**

LDSC (14) and cov-LDSC (18) methods were used to estimate the phenotypic variance in SA explained by common SNPs (SNP-based heritability,  $h^2_{\text{SNP}}$ ) from the GWAS meta-analysis summary statistics. LD scores from 1000 Genomes (EUR and EAS) were used to derive  $h^2_{\text{SNP}}$  for the multi-ancestry GWAS meta-analysis and meta-analyses of European and East Asian ancestry admixtures. To obtain acceptable attenuation ratios for Hispanic/Latino and African ancestry admixture  $h^2_{\text{SNP}}$  estimates, we used covariate-adjusted AMR LD scores from Pan UK BioBank (Pan UKBB, <https://pan.ukbb.broadinstitute.org>) and AA LD scores from gnomAD v2.1.1 (19).  $h^2_{\text{SNP}}$  was calculated on the liability scale assuming a lifetime prevalence of SA in the general population of 2% (middle of the range reported worldwide) (20). The default script of LDSC was used to exclude SNPs with MAF < 1% and INFO < 0.9 and also to restrict variants to the list of approximately 1.2 million HAPMAP SNPs that are typically well-imputed across datasets.  $h^2$  estimates remained stable across >2% and >5% MAF thresholds. The genetic correlation attributable to genome-wide SNPs ( $r_G$ ) was estimated between the ancestral admixture groups using the Popcorn package (21), and with a range of psychiatric disorders using LDSC and the largest available discovery GWAS meta-analysis summary statistics (22-33). The latter analyses were confined to European ancestry admixture for consistency with the

1  
2  
3 discovery summary data. Tests were Bonferroni-corrected, adjusting for up to 18 phenotypes  
4 hypothesized to be associated with SA based on previous epidemiological association and/or  
5 previous evidence of genetic association in LD Hub (34). Previous LD Hub analyses in ISGC  
6 were pre-categorized manually into risk factor groups relevant to SA (5, 35, 36): autoimmune  
7 disease, neurologic disease, heart disease, hypertension, diabetes, kidney disease, cancer,  
8 alcohol use, smoking, pain, psychiatric, sleep, life stressors, socioeconomic, and  
9 education/cognition.  $r_G$  of SA in ISGC and MVP in this study were calculated using LDSC, and  
10 references for the discovery GWAS are listed in Table S2. Differences in  $r_G$  across other  
11 phenotypes using EUR GWAS meta-analyses were tested as a deviation from 0, using the  
12 block jackknife method implemented in LDSC (37). To examine phenome-wide partial genetic  
13 causality, the Complex-Traits Genetics Virtual Lab (CTG-VL) (38) was used to conduct FDR-  
14 corrected Genetic Causal Proportion (GCP) analyses on the EUR summary data.  
15

### 16 17 **Conditioning suicide attempt on major depressive disorder and PTSD**

18  
19 The results of the EUR GWAS SA meta-analysis were conditioned on genetic risks for major  
20 depressive disorder (MDD) (27) and post-traumatic stress disorder (PTSD) (32) in secondary  
21 analyses, to examine genetic associations both shared with and unique to suicide risk. Results  
22 were conditioned because MDD and PTSD are both highly co-morbid with SA, and because  
23 PTSD is particularly prevalent within military veteran populations (i.e., MVP). Conditioning was  
24 conducted using mtCOJO (multi-trait-based COnditional & JOint analysis using GWAS  
25 summary data) (39), implemented in GCTA software (40). mtCOJO estimates the effect size of  
26 a SNP on an outcome trait (e.g., SA) conditioned on exposure trait(s) (e.g., MDD). GWS SNPs  
27 for the exposure are used as instruments to estimate the effect of the exposure on the outcome,  
28 and this effect is used to perform genome-wide conditioning, yielding conditioned effect sizes  
29 and  $p$ -values for the outcome trait. The EUR-only SA GWAS summary statistics were used as  
30 the outcome trait, because mtCOJO requires GWAS summary statistics for the exposure trait,  
31 which were derived from EUR ancestry discovery GWAS. To select independent SNPs as  
32 instruments, we selected those more than 1 megabase (Mb) apart or with an LD  $r^2 < 0.05$  based  
33 on the 1000 Genomes Project Phase 3 EUR reference panel (41). mtCOJO is robust to sample  
34 overlap between the GWAS of the exposure and outcome. In this analysis, statistical power to  
35 detect genetic associations at individual SNPs was reduced relative to the unconditioned  
36 analysis by the additional model parameters, but the genetic correlations using the conditioned  
37 summary statistics provide valuable insights into the relevant risk factors for SA over and above  
38 those related to MDD and PTSD.  
39

### 40 41 **Gene, gene pathway, and tissue enrichment analyses**

42  
43 Enrichment analyses of the GWAS results were performed to probe genes, biological pathways,  
44 and tissues implicated in SA, using the multi-ancestry and ancestry admixture-specific GWAS  
45 results.  $P$ -values quantifying the degree of association of genes and gene sets with SA were  
46 calculated using MAGMA v1.08 (42), implemented in FUMA v1.3.7 (43). Input SNPs were  
47 mapped to 18,627 protein-coding genes. Genome-wide significance was defined at  $p =$   
48  $0.05/18,627 = 2.68 \times 10^{-6}$ . Curated gene sets that included at least 10 genes from MSigDB V7.0  
49 were tested for association with SA. Competitive gene-set tests were conducted to correct for  
50 gene size, variant density and LD within and between genes. Tissue-set enrichment analyses  
51 were also performed using MAGMA implemented in FUMA, to test for enrichment of association  
52 signal in genes expressed in 54 tissue types from GTEx V8 (44) (Bonferroni-corrected  $p$ -value  
53 threshold =  $9.26 \times 10^{-4}$ ).  
54

### 55 56 **Drug target enrichment analyses**

57  
58  
59  
60



1  
2  
3  
4 Additional gene-set enrichment analyses of both the multi-ancestry and EUR GWAS meta-  
5 analysis results were performed, restricted to genes targeted by drugs, in order to investigate  
6 putative relationships of suicide attempt with specific drug types. These analyses do not identify  
7 causal relationships, but may implicate genes relevant to pharmacotherapy. This approach has  
8 been described previously (45). Gene-level and gene-set analyses were performed in MAGMA  
9 v1.08. Gene boundaries were defined using build 37 reference data from the NCBI, available on  
10 the MAGMA website (<https://ctg.cncr.nl/software/magma>), extended 35kb upstream and 10kb  
11 downstream to increase the likelihood of including regulatory regions outside of the transcribed  
12 region. Gene-level association statistics were defined as the aggregate of the mean and the  
13 lowest variant-level  $p$ -value within the gene boundary, converted to a Z-value. Gene sets were  
14 defined comprising the targets of each drug in the Drug-Gene Interaction database DGldb v.2  
15 (46) and in the Psychoactive Drug Screening Ki Database(47), both downloaded in June 2016  
16 (45). Analyses were performed using competitive gene-set analyses in MAGMA.  
17  
18

19 Results from the drug-set analysis were then grouped according to the Anatomical Therapeutic  
20 Chemical class of the drug (45). Only drug classes containing at least 10 valid drug gene sets  
21 within them were analyzed, and drug-class analysis was performed using enrichment curves. All  
22 drug gene sets were ranked by their association in the drug-set analysis, and then for a given  
23 drug class, an enrichment curve was drawn scoring a "hit" if the drug gene set was within the  
24 class, or a "miss" if it was outside of the class. The area under the curve was calculated, and a  
25  $p$ -value for this calculated as the Wilcoxon Mann-Whitney test comparing drug gene sets within  
26 the class to drug gene sets outside of the class (45). A Bonferroni-corrected significance  
27 threshold of  $p < 5.79 \times 10^{-5}$  and  $p < 4.35 \times 10^{-4}$  were used for the drug-set and the drug-class  
28 analysis, respectively, accounting for 863 drug-sets and 115 drug classes.  
29  
30

### 31 **Summary data-based Mendelian randomization**

32  
33 Summary data-based Mendelian randomization (SMR) (v1.03) (48, 49) was applied to detect  
34 GWAS signals that co-localize with expression quantitative trait loci (eQTLs), in order to  
35 investigate putative causal relationships between SNPs and SA via gene expression. SMR was  
36 performed using eQTL summary statistics from the MetaBrain consortium (50), a cortex-derived  
37 eQTL dataset consisting of 2,970 EUR-cortex samples. The analysis was conducted using the  
38 EUR-only GWAS meta-analysis results, for consistency with the eQTL data. Brain eQTL data  
39 from comparable sample sizes in other ancestral groups is not currently available. SMR analysis  
40 was limited to transcripts with at least one significant *cis*-eQTL ( $p < 5 \times 10^{-8}$ ) in the dataset (of  
41 8,753 in MetaBrain). The Bonferroni-corrected significance threshold for the SMR analysis was  
42  $p < 5.71 \times 10^{-6}$  and the significance threshold for the HEIDI test (HEterogeneity In Dependent  
43 Instruments) (51) was  $p \geq 0.01$ . A non-significant HEIDI test suggests a direct causal role, rather  
44 than a pleiotropic effect, of the SA-associated SNPs on gene expression.  
45  
46

### 47 **Polygenic risk scoring**

48  
49 Polygenic risk scores (PRS) for SA were tested for association with SA versus controls in six  
50 target cohorts: PGC MDD, BIP and SCZ (all European ancestry admixtures), CONVERGE (East  
51 Asian ancestry admixtures), and Yale-Penn and Grady Trauma Project cohorts (both primarily  
52 African ancestry admixtures, located in the United States). The SA GWAS meta-analysis was  
53 repeated, excluding each cohort in turn, to create independent discovery datasets. PRS were  
54 generated using PRS-CS (51), which uses a Bayesian regression framework to place  
55 continuous shrinkage priors on the effect sizes of SNPs in the PRS, adaptive to the strength of  
56 their association signal in the discovery GWAS and the LD structure from an external reference  
57  
58  
59  
60

1  
2  
3 panel. The 1000 Genomes EUR, EAS or AFR reference panels (41) were used to estimate LD  
4 between SNPs, as appropriate for each target cohort. PLINK 1.9 (16) was used to weight SNPs  
5 by their effect sizes calculated using PRS-CS and sum all SNPs into PRS for each individual in  
6 the target cohorts. PRS were tested for association with case versus control status in the target  
7 cohort using a logistic regression model including covariates as per the GWAS. The amount of  
8 phenotypic variance explained by the PRS ( $R^2$ ) was calculated on the liability scale, assuming a  
9 lifetime prevalence of SA in the general population of 2% (20). The Bonferroni-corrected  
10 significance threshold adjusting for six tests was  $P < 0.008$ .  
11  
12

## 13 Results

### 14 Significant shared genetic architecture of SA between civilian (ISGC) and military 15 populations (MVP)

16 The multi-ancestry GWAS included 43,871 cases and 915,025 controls from 22 cohorts (Table  
17 1). Cases were of predominantly European ancestry admixtures (EUR, 81%), with 11% of cases  
18 with significant African ancestry admixtures located in the U.S. (AFR), 5% with East Asian  
19 ancestry admixtures (EAS), and 3% with Hispanic/Latino ancestry admixtures located in the  
20 U.S. (LAT). Case definition was lifetime SA, with ~13% of all cases having died by suicide.  
21 Additional information on study characteristics and ascertainment methods is presented in  
22 Supplementary Table S1.  
23  
24

25 Cohorts across ISGC and MVP differed with respect to ascertainment, with ISGC being largely  
26 civilian and MVP being military (Table 1a). However, examination of the genetic correlation of  
27 EUR GWAS meta-analyses for ISGC and MVP ( $r_G = 0.81$ ,  $SE = 0.091$ ,  $p = 2.85 \times 10^{-19}$ ) indicated  
28 consistency of common-variant genetic architecture across these meta-analyses. Results from  
29 both fixed and meta-regression models were comparable in the multi-ancestry and EUR GWAS  
30 meta-analyses (all GWS effect size correlations  $> .99$ ) indicating that ancestry and cohort  
31 ascertainment were unlikely to confound observed genetic effects (Table 1b).  
32  
33

### 34 GWAS meta-analysis of SA across and within ancestries identified 12 GWS loci

35 The multi-ancestry GWAS meta-analysis identified eight genome-wide significant (GWS) loci  
36 ( $P < 5 \times 10^{-8}$ ) (Figure 1). The  $h^2_{SNP}$  of SA was significant at 5.7% ( $SE = 0.003$ ,  $p = 5.70 \times 10^{-80}$ ) on the  
37 liability scale assuming an SA population prevalence of 2%. The cov-LDSC intercept was 1.04  
38 ( $SE = 0.01$ ,  $p = 1.59 \times 10^{-5}$ ) and the attenuation ratio was 0.13 ( $SE = 0.03$ ), indicating that the  
39 majority of inflation of GWAS test statistics is likely due to polygenicity (Supplementary Figure  
40 S1).  
41  
42

43 The locus most strongly associated with SA was in an intergenic region on chromosome 7  
44 (index SNP rs62474683, odds ratio (OR) A allele = 1.05 [1.04-1.07],  $p = 8.72 \times 10^{-12}$ , frequency in  
45 cases = 0.57, frequency in controls = 0.56, Forest plot Figure S2). At other GWS loci, index  
46 SNPs were intronic in the *SLC6A9*, *DRD2*, *HS6ST3* and *FURIN* genes (Table 2; additional  
47 summary data of all GWS loci are provided in Table S1b). On chromosome 3, a GWS SNP  
48 localized to the 5' untranslated region of the *NLGN1* gene, though the index SNP lacked  
49 neighboring SNPs in LD. There was no evidence of heterogeneity of effects across cohorts for  
50 any GWS locus according to  $I^2$  heterogeneity indices (Table S1b). Forest plots for GWS loci are  
51 included in Figures S2-S9.  
52  
53  
54  
55  
56  
57  
58  
59  
60

1  
2  
3 The EUR GWAS meta-analysis  $h^2_{\text{SNP}}$  was estimated at 7.0% (SE=0.4%) and identified four  
4 additional GWS loci (Table 2, Figure S10, Forest plots Figures S11-14), composed of mostly  
5 intergenic index SNPs. The nearest genes were *PDE4B*, *OTX2-AS1*, *CACNG2*, and one locus  
6 was in the major histocompatibility complex (MHC). GWAS meta-analyses in AFR ( $h^2_{\text{SNP}}$  =  
7 9.8%, SE = 1.8%) and EAS ( $h^2_{\text{SNP}}$  = 9.8%, SE = 4.5%) produced no GWS loci. The LAT SA  
8  $h^2_{\text{SNP}}$  (from the MVP GWAS) was estimated at 10.0% (SE = 6.5%). Regional plots of the 12  
9 GWS risk loci across all meta-analyses are presented in Supplementary Figures S15-S26.  
10 Mapped genes from the top loci in multi-ancestry and ancestry admixture-specific meta-  
11 analyses are presented in Supplementary Tables S3-S6.  
12

### 13 **Genetic correlations of SA across ancestry GWAS**

14  
15 The genetic correlations of SA across each of the ancestral groupings were attenuated, with  
16 estimated  $r_G$ s between 0.064 (SE = 0.574) (EAS with LAT) and 0.997 (SE = .537) (EUR with  
17 LAT) Popcorn  $r_G$  results can be found in Table S7. Individual cohort GWAS were variably  
18 powered to estimate genetic correlation estimates with the other cohorts. LDSC estimates  
19 across all individual GWAS are presented in Table S8, though cov-LDSC  $h^2_{\text{SNP}}$  and Popcorn  $r_G$ s  
20 in Table S7 are the preferred sources for statistics involving ancestry admixtures.  
21  
22

### 23 **SA GWS loci are enriched for brain-expressed genes and overlap with previous genetic** 24 **associations to known risk factors**

25  
26 Significant signal enrichment was observed in genes expressed in pituitary gland and brain  
27 tissues, based on the multi-ancestry GWAS (Table S9). Significant gene expression in brain  
28 was also observed in the EUR analysis (Table S10). Tissue-set enrichment analyses and  
29 corresponding GTEx gene expression heatmaps for all of the multi- and ancestry admixture-  
30 specific GWAS are provided in Tables S9-S12 and Figures S31-S34.  
31  
32

33 Several GWS genes were identified in MAGMA analyses of the multi-ancestry and EUR meta-  
34 analyses (Table S13; enrichment of SA signal with genes and gene sets across all meta-  
35 analyses are presented in Supplementary Tables S13-S14). MAGMA gene-based tests of the  
36 GWAS meta-analyses, with GWS results, are presented in Manhattan plots and QQ-plots in  
37 Figures S27-S30. EAS and AA  $p$ -value thresholds for inclusion of GWAS variants in follow-up  
38 analysis were relaxed to  $p < 1 \times 10^{-5}$  and  $1 \times 10^{-6}$ , respectively, in order to explore gene-based  
39 tests of top ancestry-specific GWAS variants. Top genes implicated in the EAS analysis  
40 included *C11orf87*, *MYO1C*, and *FAXC*, and top genes implicated in the AFR analysis included  
41 *CNTNAP2*, *IGF2R*, *MAN1B1*, and *SLC22A1*. Neither set of genes was significantly associated  
42 with any pathway or tissue enrichment.  
43

44 Gene-set analyses from the multi-ancestry and EUR GWAS identified 519 significant gene sets  
45 (31 and 488, respectively), spanning multiple domains, including epigenetics, gene regulation  
46 and transcription, cellular response to stress, DNA repair, and immunologic signatures (Table  
47 S14). The 31 multi-ancestry gene sets included schizophrenia and autism, containing protein-  
48 coding genes such as *FURIN*, *FES*, and *DRD2*, mapped from GWS loci. Most of the 488 EUR  
49 gene sets were due to overlap with a small group of 35 histone-coding genes.  
50

51 Significant proportions of overlapping genes in GWAS Catalog (52) gene sets were observed for  
52 both multi-ancestry and EUR meta-analyses (Figures S35-S36). The 12 GWS loci from the  
53 multi-ancestry and EUR GWAS meta-analyses were tagged in several GWAS including  
54 cognition, smoking, insomnia, and risky behavior. Six of the 12 risk loci had  $p$ -values  $< 0.005$  for  
55 the “Suicide or Other Intentional Self-Harm” analysis in FinnGen. A comprehensive list of results  
56  
57  
58  
59  
60

of SNP associations from the GWAS Catalog is presented in Table S15. Examination of the pheWAS results ( $p < 0.005$ ) across UK Biobank, FinnGen and the GWAS Catalog resulted in the identification of several psychiatric, weight/BMI- and immune-related traits (Table S16).

Two loci implicated specific genes, *FES* and *TIAF1*, that were significantly associated with SA in SMR analyses and passed the HEIDI test. SMR results suggested that SA risk may be mediated by an increased expression of *FES* (previously implicated in cross-ancestry schizophrenia(53)) and decreased expression of *TIAF1* in cortex (Table S17).

### Significant overlap of SA GWS loci and targets of antipsychotics and antidepressants

Drug target enrichment results suggested that SA risk is most associated with the targets of antipsychotic and antidepressant drug classes. In the multi-ancestry gene-set analysis of the targets of drug classes defined by their Anatomical Therapeutic Chemical (ATC) classes (45), there was significant enrichment in the targets of four drug classes: *Antipsychotics*, *Psychoanaleptics*, which includes individually significant *Antidepressants* and its subclass *Other Antidepressants* (Table S18). The class of *Other Antidepressants* includes those not classified as selective serotonin reuptake inhibitors, monoamine oxidase inhibitors or monoamine reuptake inhibitors.

In the EUR ancestry admixture GWAS analysis, there was significant enrichment in the targets of just three drug classes, including *Antipsychotics*, the broad class of *Psycholeptics* (drugs with a calming effect on behavior), and the class *Cytotoxic Antibiotics and Related Substances* (Table S19). Only one drug, the insecticide cyfluthrin, was significantly enriched when grouping genes targeted by individual drugs (from the Drug-Gene Interaction Database DGIdb v.2 and the Psychoactive Drug Screening Ki Database) and this was only observed in the EUR GWAS results (see Tables S20 and S21 for multi-ancestry and EUR results).

### Significant genetic correlation of SA with known non-psychiatric risk factors minimally affected after conditioning on MDD and PTSD

The out-of-sample polygenic risk analyses based on the new ISGC+MVP discovery GWAS meta-analysis statistics resulted in higher  $R^2$  estimates than were observed in ISGC1, particularly for AA (maximum variance explained  $R^2 = 0.66\%$ ,  $p = 0.01$ , and a maximum increase of 146%) and EAS ( $R^2 = 0.34\%$ ,  $p = 8.1 \times 10^{-6}$ , a 36% increase. EUR maximum variance explained = 1.11%,  $p = 6.2 \times 10^{-22}$ , a 24% increase from ISGC1 (Table S22). Figure 2 presents a forest plot of the genetic correlations of the EUR GWAS meta-analyses of suicide attempt with several physical and mental health phenotypes, as well as one control phenotype (body mass index, BMI). Significant shared genetic covariation of EUR SA with smoking ( $r_G = 0.46$ , SE = 0.03,  $p = 8.06 \times 10^{-63}$ ), ADHD ( $r_G = 0.55$ , SE = 0.04,  $p = 2.98 \times 10^{-41}$ ), risk tolerance ( $r_G = 0.32$ , SE = 0.02,  $p = 1.34 \times 10^{-59}$ ), and chronic pain ( $r_G = .45$ , SE = 0.03,  $p = 9.50 \times 10^{-50}$ ) were observed both before and after conditioning on MDD and PTSD. Significant positive genetic correlations of neuroticism, schizophrenia, bipolar disorder, and self-harm ideation with SA ( $r_G = 0.45$  SE = 0.03,  $p = 1.0 \times 10^{-52}$ ;  $r_G = 0.43$ , SE = 0.03,  $p = 1.32 \times 10^{-55}$ ;  $r_G = 0.48$ , SE = 0.04,  $p = 1.81 \times 10^{-37}$ ;  $r_G = 0.83$ , SE = 0.06,  $p = 1.94 \times 10^{-51}$ ) did not remain significant after conditioning on both MDD & PTSD.

For completeness of comparison across cohorts and phenotypic subgroups (SA versus SD), genetic correlation estimates for phenotypes are presented in Table S23 using the European ancestry admixture GWAS summary statistics from 1) ISGC + MVP, 2) ISGC only, 3) MVP only, 4) ISGC without suicide death, 5) ISGC suicide death only (the Utah Suicide Study, current N =

1  
2  
3 4,692 EUR suicide deaths and 20,702 controls), and 6) conditioning on MDD and PTSD for  
4 MVP, ISGC, and MVP + ISGC. LDSC jackknife tests of differences between these genetic  
5 correlation estimates are presented in Table S24, and more exhaustive comparison of  
6 phenome-wide  $r_G$  and genetic causal proportion analyses, with the European admixture GWAS  
7 meta-analysis, are provided in Table S25. Genetic causal proportion analyses implicated  
8 several non-psychiatric genetic risks in EUR SA, including particulate air matter pollution  
9 exposure (pm 2.5), smoking exposures, and pulmonary health factors. Risk factors with  
10 significant partial genetic causality estimates are presented in Table S25.  
11  
12  
13

## 14 Discussion

15  
16 This study presents the largest GWAS meta-analysis of SA to date, incorporating multiple  
17 ancestries and expanding the set of GWS loci from four to 12. Discovery of three of the novel  
18 GWS loci, and improved out-of-sample PRS prediction across ancestry, was only possible with  
19 the aggregation of all ancestral cohorts. For the first time, we show that implicated genes are  
20 highly expressed in brain tissue, enriched in pathways related to gene regulation and  
21 transcription, cellular response to stress, DNA repair, and immunologic signatures, and are  
22 shared with epidemiological risk factors. Genetic correlation and causal proportion analyses  
23 implicate a number of non-psychiatric genetic risks in SA, including pulmonary health factors.  
24 We also provide important evidence that a significant proportion of the common variant genetic  
25 architecture of SA is shared across large civilian and veteran populations with disparate  
26 demographics.  
27

28  
29 One advantage of combining the ISGC with MVP was the opportunity to examine genetic effects  
30 across heterogeneous cohorts. For example, the sample composition and ascertainment across  
31 the ISGC is predominantly civilian and international, with a large proportion of females (7). A  
32 number of the ISGC samples from the Psychiatric Genomics Consortium cohorts (Table 1) are  
33 collected from individuals with major psychiatric disorders, representing a more clinical  
34 population. In contrast, the MVP cohorts are predominantly male (8), and all are military  
35 veterans ascertained through the U.S. Department of Veterans Affairs (VA) healthcare system.  
36 The consistency of SA common variant genetic architecture across EUR MVP and ISGC  
37 cohorts indicates that power may be further enhanced by combining future cohorts with differing  
38 ascertainment.  
39

40  
41 As expected, the increase in sample size, and resulting increase in power, led to the  
42 identification of several new GWS loci and improved out-of-sample PRS prediction, across  
43 ancestries, relative to the previous ISGC-only analyses. The loci identified in this study implicate  
44 genes expressed in brain. Genes associated with SA in this study are highly enriched among  
45 psychiatric phenotypes and overall health and wellness risk factors for SA. Brain is the  
46 predominant tissue enriched for associated genes, and there is also significant enrichment in  
47 pituitary gland, consistent with previous association of SA with hypothalamic-pituitary-adrenal  
48 system dysregulation (54). In addition, the enrichment of pathways related to epigenetics and  
49 gene regulation and transcription suggest that epigenetic modifications, such as DNA  
50 methylation, may play a role in modulating the effect of SA-associated genetic variants.  
51 However, epigenetic pathways were only enriched in GWAS of European ancestry admixture,  
52 pointing to the potential importance and varied impact of epigenetic mechanisms in diverse  
53 biological systems that may contribute to SA risk. Pathways enriched in the multi-ancestry  
54 GWAS were absent of histone-coding genes, and contained protein-coding genes mapped from  
55 GWS loci such as *FURIN*, *FES*, and *DRD2*. These multi-ancestry pathway results, while harder  
56 to interpret, may be more generalizable to the global population.  
57  
58  
59  
60

1  
2  
3 Drug target enrichment results suggest that SA risk is associated with the targets of  
4 antipsychotic and antidepressant drug classes. One explanation may be that psychiatric  
5 symptoms associated with SA risk are also associated with these drug targets, though the  
6 direction of any association of drugs with risk cannot be assumed and is not directly tested here.  
7 The SMR analysis of EUR results implicated *FES* and *TIAF1* in SA. *FES* has been previously  
8 implicated in cross-ancestry schizophrenia (53).  
9

10 Genetic correlations of SA with ADHD, smoking, pain, and risk tolerance remained significant  
11 after conditioning SA on both MDD and PTSD, while schizophrenia, bipolar disorder, and  
12 neuroticism did not. This suggests a potential role for health factors in SA risk that are both  
13 shared with and distinct from psychiatric disorders, as proposed in Mann & Rizk's stress  
14 diathesis model (55) of suicidal behavior based on clinical and biological studies. The suicide  
15 diathesis includes altered decision-making that may be more pronounced in the context of  
16 ADHD and smoking, and may be aggravated by sleep problems. Pain is associated with the  
17 stress domain of suicidal behavior, and is also associated with increased access to prescription  
18 opioids. Overall, this study leverages genetic data to examine important risk phenotypes that  
19 may or may not be present in medical records.  
20  
21

22 Some limitations of this study should be considered. First, a meta-analysis of such a large  
23 number of diverse cohorts, with different assessments of SA, could reduce statistical power by  
24 increasing heterogeneity. Our analyses remain still more conservative with the inclusion of age  
25 and sex covariates in three of the ISGC cohorts and MVP. However, GWAS of the primary  
26 datasets typically produced significant—and high—genetic correlation estimates. GWS loci  
27 produced similar effect sizes across cohorts and across fixed and meta-regression models  
28 (correlations of EUR and multi-ancestry GWS effect sizes across models exceeded 0.99).  
29 Indeed, the apparent consistency of genetic architecture across EUR ISGC and MVP cohorts is  
30 important given marked demographic and ascertainment differences.  
31

32 This study also provides GWAS meta-analyses specific to African and East Asian ancestry  
33 admixtures. The lack of GWS loci specific to these SA meta-analyses underscores a strong  
34 need for greater ancestral diversity and representation in suicide genetics research. With high  
35 variability of sample sizes of individual ISGC and MVP ancestral cohorts (case *ns* ranging from  
36 115 to 9,196) some GWAS yielded  $h^2$  and  $r_G$  estimates, while others did not. Variability in  $r_G$   
37 indicates that increasing the examination of non-European ancestries in the future will  
38 significantly increase the generalizability of the genetic risk signals identified from studies of  
39 suicide phenotypes and the portability of polygenic scores. Importantly, broader ancestral  
40 representation, particularly from population-dense areas such as India, Western Asia, and the  
41 Global South, will be critical for improving the rigor and generalizability of GWAS results in  
42 future research.  
43  
44

45 Implicated genes and established genetic relationships with ADHD, smoking, and risk tolerance  
46 help to inform our understanding of biological contributions to risk of SA. From a clinical  
47 standpoint, impulsivity, smoking status, and risk-taking behaviors are intuitive co-morbid  
48 indicators of suicide risk. Genetic causal proportion analyses implicate these and other health  
49 factors—pulmonary and cardiovascular—in risk for SA. And our preliminary comparison of  
50 genetic correlations across SA vs. SD GWAS cohorts appears to implicate risk tolerance in the  
51 severity of the suicide phenotype. Further study, comparing SD and SA with subjects with  
52 suicidal ideation, will allow for a comparison of those who think about suicide and those who act.  
53 Importantly, genetic risk for SA, calculated in new independent cohorts using these GWAS  
54 summary data, will contribute to a deeper understanding of the clinical implications of genetic  
55  
56  
57  
58  
59  
60

1  
2  
3 risk for suicide. The future addition of multiple ancestral cohorts is likely to yield continued  
4 discovery and increased opportunity for clinical translation.  
5  
6  
7  
8  
9

## 10 References

- 11 1. Organization TWH: Suicide.
- 12 2. Organization TWH: Preventing suicide: A global imperative.
- 13 3. (SAMHSA) SAaMHSA.
- 14 4. Control CfD.
- 15 5. Franklin JC, Ribeiro JD, Fox KR, Bentley KH, Kleiman EM, Huang X, Musacchio KM,  
16 Jaroszewski AC, Chang BP, Nock MK. Risk factors for suicidal thoughts and behaviors: A meta-  
17 analysis of 50 years of research. *Psychol Bull.* 2017;143:187-232.
- 18 6. Voracek M, Loibl LM. Genetics of suicide: a systematic review of twin studies. *Wien Klin*  
19 *Wochenschr.* 2007;119:463-475.
- 20 7. Mullins N, Kang J, Campos AI, Coleman JRI, Edwards AC, Galfalvy H, Levey DF, Lori A,  
21 Shabalin A, Starnawska A, Su MH, Watson HJ, Adams M, Awasthi S, Gandal M, Hafferty JD,  
22 Hishimoto A, Kim M, Okazaki S, Otsuka I, Ripke S, Ware EB, Bergen AW, Berrettini WH, Bohus  
23 M, Brandt H, Chang X, Chen WJ, Chen HC, Crawford S, Crow S, DiBlasi E, Duriez P,  
24 Fernandez-Aranda F, Fichter MM, Gallinger S, Glatt SJ, Gorwood P, Guo Y, Hakonarson H,  
25 Halmi KA, Hwu HG, Jain S, Jamain S, Jimenez-Murcia S, Johnson C, Kaplan AS, Kaye WH,  
26 Keel PK, Kennedy JL, Klump KL, Li D, Liao SC, Lieb K, Lilienfeld L, Liu CM, Magistretti PJ,  
27 Marshall CR, Mitchell JE, Monson ET, Myers RM, Pinto D, Powers A, Ramoz N, Roepke S,  
28 Rozanov V, Scherer SW, Schmahl C, Sokolowski M, Strober M, Thornton LM, Treasure J,  
29 Tsuang MT, Witt SH, Woodside DB, Yilmaz Z, Zillich L, Adolfsson R, Agartz I, Air TM, Alda M,  
30 Alfredsson L, Andreassen OA, Anjorin A, Appadurai V, Soler Artigas M, Van der Auwera S,  
31 Azevedo MH, Bass N, Bau CHD, Baune BT, Bellivier F, Berger K, Biernacka JM, Bigdeli TB,  
32 Binder EB, Boehnke M, Boks MP, Bosch R, Braff DL, Bryant R, Budde M, Byrne EM, Cahn W,  
33 Casas M, Castelao E, Cervilla JA, Chaumette B, Cichon S, Corvin A, Craddock N, Craig D,  
34 Degenhardt F, Djurovic S, Edenberg HJ, Fanous AH, Foo JC, Forstner AJ, Frye M, Fullerton  
35 JM, Gatt JM, Gejman PV, Giegling I, Grabe HJ, Green MJ, Grevet EH, Grigoriou-Serbanescu  
36 M, Gutierrez B, Guzman-Parra J, Hamilton SP, Hamshere ML, Hartmann A, Hauser J,  
37 Heilmann-Heimbach S, Hoffmann P, Ising M, Jones I, Jones LA, Jonsson L, Kahn RS, Kelsoe  
38 JR, Kendler KS, Kloiber S, Koenen KC, Kogevinas M, Konte B, Krebs MO, Landen M, Lawrence  
39 J, Leboyer M, Lee PH, Levinson DF, Liao C, Lissowska J, Lucae S, Mayoral F, McElroy SL,  
40 McGrath P, McGuffin P, McQuillin A, Medland SE, Mehta D, Melle I, Milaneschi Y, Mitchell PB,  
41 Molina E, Morken G, Mortensen PB, Muller-Myhsok B, Nievergelt C, Nimgaonkar V, Nothen  
42 MM, O'Donovan MC, Ophoff RA, Owen MJ, Pato C, Pato MT, Penninx B, Pimm J, Pistis G,  
43 Potash JB, Power RA, Preisig M, Quested D, Ramos-Quiroga JA, Reif A, Ribases M, Richarte  
44 V, Rietschel M, Rivera M, Roberts A, Roberts G, Rouleau GA, Rovaris DL, Rujescu D,  
45 Sanchez-Mora C, Sanders AR, Schofield PR, Schulze TG, Scott LJ, Serretti A, Shi J, Shyn SI,  
46 Sirignano L, Sklar P, Smeland OB, Smoller JW, Sonuga-Barke EJS, Spalletta G, Strauss JS,  
47 Swiatkowska B, Trzaskowski M, Turecki G, Vilar-Ribo L, Vincent JB, Volzke H, Walters JTR,  
48 Shannon Weickert C, Weickert TW, Weissman MM, Williams LM, Wray NR, Zai CC, Ashley-  
49 Koch AE, Beckham JC, Hauser ER, Hauser MA, Kimbrel NA, Lindquist JH, McMahon B, Oslin  
50 DW, Qin X, Major Depressive Disorder Working Group of the Psychiatric Genomics C, Bipolar  
51 Disorder Working Group of the Psychiatric Genomics C, Eating Disorders Working Group of the  
52 Psychiatric Genomics C, German Borderline Genomics C, Workgroup MVPSE, Program VAMV,  
53  
54  
55  
56  
57  
58  
59  
60

- 1  
2  
3 Agerbo E, Borglum AD, Breen G, Erlangsen A, Esko T, Gelernter J, Hougaard DM, Kessler RC,  
4 Kranzler HR, Li QS, Martin NG, McIntosh AM, Mors O, Nordentoft M, Olsen CM, Porteous D,  
5 Ursano RJ, Wasserman D, Werge T, Whiteman DC, Bulik CM, Coon H, Demontis D, Docherty  
6 AR, Kuo PH, Lewis CM, Mann JJ, Renteria ME, Smith DJ, Stahl EA, Stein MB, Streit F, Willour  
7 V, Ruderfer DM. Dissecting the Shared Genetic Architecture of Suicide Attempt, Psychiatric  
8 Disorders, and Known Risk Factors. *Biol Psychiatry*. 2022;91:313-327.
- 9  
10 8. Kimbrel NA, Ashley-Koch AE, Qin XJ, Lindquist JH, Garrett ME, Dennis MF, Hair LP,  
11 Huffman JE, Jacobson DA, Madduri RK, Trafton JA, Coon H, Docherty AR, Kang J, Mullins N,  
12 Ruderfer DM, Program VAMV, Workgroup MVPSE, International Suicide Genetics C, Harvey  
13 PD, McMahon BH, Oslin DW, Hauser ER, Hauser MA, Beckham JC. A genome-wide  
14 association study of suicide attempts in the million veterans program identifies evidence of pan-  
15 ancestry and ancestry-specific risk loci. *Mol Psychiatry*. 2022;27:2264-2272.
- 16 9. Gaziano JM, Concato J, Brophy M, Fiore L, Pyarajan S, Breeling J, Whitbourne S, Deen J,  
17 Shannon C, Humphries D, Guarino P, Aslan M, Anderson D, LaFleur R, Hammond T, Schaa K,  
18 Moser J, Huang G, Muralidhar S, Przygodzki R, O'Leary TJ. Million Veteran Program: A mega-  
19 biobank to study genetic influences on health and disease. *J Clin Epidemiol*. 2016;70:214-223.
- 20 10. Sullivan PF, Agrawal A, Bulik CM, Andreassen OA, Borglum AD, Breen G, Cichon S,  
21 Edenberg HJ, Faraone SV, Gelernter J, Mathews CA, Nievergelt CM, Smoller JW, O'Donovan  
22 MC, Psychiatric Genomics C. Psychiatric Genomics: An Update and an Agenda. *Am J*  
23 *Psychiatry*. 2018;175:15-27.
- 24 11. Martin AR, Gignoux CR, Walters RK, Wojcik GL, Neale BM, Gravel S, Daly MJ,  
25 Bustamante CD, Kenny EE. Human Demographic History Impacts Genetic Risk Prediction  
26 across Diverse Populations. *Am J Hum Genet*. 2017;100:635-649.
- 27 12. Docherty AR, Shabalin AA, DiBlasi E, Monson E, Mullins N, Adkins DE, Bacanu SA, Bakian  
28 AV, Crowell S, Chen D, Darlington TM, Callor WB, Christensen ED, Gray D, Keeshin B, Klein  
29 M, Anderson JS, Jerominski L, Hayward C, Porteous DJ, McIntosh A, Li Q, Coon H. Genome-  
30 Wide Association Study of Suicide Death and Polygenic Prediction of Clinical Antecedents. *Am*  
31 *J Psychiatry*. 2020;177:917-927.
- 32 13. Hoffmire C, Stephens B, Morley S, Thompson C, Kemp J, Bossarte RM. VA Suicide  
33 Prevention Applications Network: A National Health Care System-Based Suicide Event Tracking  
34 System. *Public Health Rep*. 2016;131:816-821.
- 35 14. Bulik-Sullivan BK, Loh PR, Finucane HK, Ripke S, Yang J, Schizophrenia Working Group of  
36 the Psychiatric Genomics C, Patterson N, Daly MJ, Price AL, Neale BM. LD Score regression  
37 distinguishes confounding from polygenicity in genome-wide association studies. *Nat Genet*.  
38 2015;47:291-295.
- 39 15. Fang H, Hui Q, Lynch J, Honerlaw J, Assimes TL, Huang J, Vujkovic M, Damrauer SM,  
40 Pyarajan S, Gaziano JM, DuVall SL, O'Donnell CJ, Cho K, Chang KM, Wilson PWF, Tsao PS,  
41 Program VAMV, Sun YV, Tang H. Harmonizing Genetic Ancestry and Self-identified  
42 Race/Ethnicity in Genome-wide Association Studies. *Am J Hum Genet*. 2019;105:763-772.
- 43 16. Chang CC, Chow CC, Tellier LC, Vattikuti S, Purcell SM, Lee JJ. Second-generation  
44 PLINK: rising to the challenge of larger and richer datasets. *Gigascience*. 2015;4:7.
- 45 17. Willer CJ, Li Y, Abecasis GR. METAL: fast and efficient meta-analysis of genomewide  
46 association scans. *Bioinformatics*. 2010;26:2190-2191.
- 47 18. Luo Y, Li X, Wang X, Gazal S, Mercader JM, Me Research T, Consortium STD, Neale BM,  
48 Florez JC, Auton A, Price AL, Finucane HK, Raychaudhuri S. Estimating heritability and its  
49 enrichment in tissue-specific gene sets in admixed populations. *Hum Mol Genet*. 2021;30:1521-  
50 1534.
- 51 19. Karczewski KJ, Francioli LC, Tiao G, Cummings BB, Alfoldi J, Wang Q, Collins RL,  
52 Laricchia KM, Ganna A, Birnbaum DP, Gauthier LD, Brand H, Solomonson M, Watts NA,  
53 Rhodes D, Singer-Berk M, England EM, Seaby EG, Kosmicki JA, Walters RK, Tashman K,  
54 Farjoun Y, Banks E, Poterba T, Wang A, Seed C, Whiffin N, Chong JX, Samocha KE, Pierce-  
55  
56  
57  
58  
59  
60



- 1  
2  
3 Hoffman E, Zappala Z, O'Donnell-Luria AH, Minikel EV, Weisburd B, Lek M, Ware JS, Vittal C,  
4 Armean IM, Bergelson L, Cibulskis K, Connolly KM, Covarrubias M, Donnelly S, Ferriera S,  
5 Gabriel S, Gentry J, Gupta N, Jeandet T, Kaplan D, Llanwarne C, Munshi R, Novod S, Petrillo  
6 N, Roazen D, Ruano-Rubio V, Saltzman A, Schleicher M, Soto J, Tibbetts K, Tolonen C, Wade  
7 G, Talkowski ME, Genome Aggregation Database C, Neale BM, Daly MJ, MacArthur DG. The  
8 mutational constraint spectrum quantified from variation in 141,456 humans. *Nature*.  
9 2020;581:434-443.
- 10 20. Nock MK, Borges G, Bromet EJ, Alonso J, Angermeyer M, Beautrais A, Bruffaerts R, Chiu  
11 WT, de Girolamo G, Gluzman S, de Graaf R, Gureje O, Haro JM, Huang Y, Karam E, Kessler  
12 RC, Lepine JP, Levinson D, Medina-Mora ME, Ono Y, Posada-Villa J, Williams D. Cross-  
13 national prevalence and risk factors for suicidal ideation, plans and attempts. *Br J Psychiatry*.  
14 2008;192:98-105.
- 15 21. Brown BC, Asian Genetic Epidemiology Network Type 2 Diabetes C, Ye CJ, Price AL,  
16 Zaitlen N. Transethnic Genetic-Correlation Estimates from Summary Statistics. *Am J Hum*  
17 *Genet*. 2016;99:76-88.
- 18 22. Campos AI, Verweij KJH, Statham DJ, Madden PAF, Maciejewski DF, Davis KAS, John A,  
19 Hotopf M, Heath AC, Martin NG, Renteria ME. Genetic aetiology of self-harm ideation and  
20 behaviour. *Sci Rep*. 2020;10:9713.
- 21 23. Demontis D, Walters RK, Martin J, Mattheisen M, Als TD, Agerbo E, Baldursson G,  
22 Belliveau R, Bybjerg-Grauholm J, Baekvad-Hansen M, Cerrato F, Chambert K, Churchhouse C,  
23 Dumont A, Eriksson N, Gandal M, Goldstein JI, Grasby KL, Grove J, Gudmundsson OO,  
24 Hansen CS, Hauberg ME, Hollegaard MV, Howrigan DP, Huang H, Maller JB, Martin AR, Martin  
25 NG, Moran J, Pallesen J, Palmer DS, Pedersen CB, Pedersen MG, Poterba T, Poulsen JB,  
26 Ripke S, Robinson EB, Satterstrom FK, Stefansson H, Stevens C, Turley P, Walters GB, Won  
27 H, Wright MJ, Consortium AWGotPG, Early L, Genetic Epidemiology C, andMe Research T,  
28 Andreassen OA, Asherson P, Burton CL, Boomsma DI, Cormand B, Dalsgaard S, Franke B,  
29 Gelernter J, Geschwind D, Hakonarson H, Haavik J, Kranzler HR, Kuntsi J, Langley K, Lesch  
30 KP, Middeldorp C, Reif A, Rohde LA, Roussos P, Schachar R, Sklar P, Sonuga-Barke EJS,  
31 Sullivan PF, Thapar A, Tung JY, Waldman ID, Medland SE, Stefansson K, Nordentoft M,  
32 Hougaard DM, Werge T, Mors O, Mortensen PB, Daly MJ, Faraone SV, Borglum AD, Neale  
33 BM. Discovery of the first genome-wide significant risk loci for attention deficit/hyperactivity  
34 disorder. *Nat Genet*. 2019;51:63-75.
- 35 24. Grove J, Ripke S, Als TD, Mattheisen M, Walters RK, Won H, Pallesen J, Agerbo E,  
36 Andreassen OA, Anney R, Awashti S, Belliveau R, Bettella F, Buxbaum JD, Bybjerg-Grauholm  
37 J, Baekvad-Hansen M, Cerrato F, Chambert K, Christensen JH, Churchhouse C, Dellenvall K,  
38 Demontis D, De Rubeis S, Devlin B, Djurovic S, Dumont AL, Goldstein JI, Hansen CS, Hauberg  
39 ME, Hollegaard MV, Hope S, Howrigan DP, Huang H, Hultman CM, Klei L, Maller J, Martin J,  
40 Martin AR, Moran JL, Nyegaard M, Naerland T, Palmer DS, Palotie A, Pedersen CB, Pedersen  
41 MG, dPoterba T, Poulsen JB, Pourcain BS, Qvist P, Rehnstrom K, Reichenberg A, Reichert J,  
42 Robinson EB, Roeder K, Roussos P, Saemundsen E, Sandin S, Satterstrom FK, Davey Smith  
43 G, Stefansson H, Steinberg S, Stevens CR, Sullivan PF, Turley P, Walters GB, Xu X, Autism  
44 Spectrum Disorder Working Group of the Psychiatric Genomics C, Bupgen, Major Depressive  
45 Disorder Working Group of the Psychiatric Genomics C, andMe Research T, Stefansson K,  
46 Geschwind DH, Nordentoft M, Hougaard DM, Werge T, Mors O, Mortensen PB, Neale BM, Daly  
47 MJ, Borglum AD. Identification of common genetic risk variants for autism spectrum disorder.  
48 *Nat Genet*. 2019;51:431-444.
- 49 25. Karlsson Linner R, Biroli P, Kong E, Meddens SFW, Wedow R, Fontana MA, Lebreton M,  
50 Tino SP, Abdellaoui A, Hammerschlag AR, Nivard MG, Okbay A, Rietveld CA, Timshel PN,  
51 Trzaskowski M, Vlaming R, Zund CL, Bao Y, Buzdugan L, Caplin AH, Chen CY, Eibich P,  
52 Fontanillas P, Gonzalez JR, Joshi PK, Karhunen V, Kleinman A, Levin RZ, Lill CM, Meddens  
53 GA, Muntane G, Sanchez-Roige S, Rooij FJV, Taskesen E, Wu Y, Zhang F, and Me Research  
54  
55  
56  
57  
58  
59  
60

- 1  
2  
3 T, e QC, International Cannabis C, Social Science Genetic Association C, Auton A, Boardman  
4 JD, Clark DW, Conlin A, Dolan CC, Fischbacher U, Groenen PJF, Harris KM, Hasler G, Hofman  
5 A, Ikram MA, Jain S, Karlsson R, Kessler RC, Kooyman M, MacKillop J, Mannikko M, Morcillo-  
6 Suarez C, McQueen MB, Schmidt KM, Smart MC, Sutter M, Thurik AR, Uitterlinden AG, White  
7 J, Wit H, Yang J, Bertram L, Boomsma DI, Esko T, Fehr E, Hinds DA, Johannesson M, Kumari  
8 M, Laibson D, Magnusson PKE, Meyer MN, Navarro A, Palmer AA, Pers TH, Posthuma D,  
9 Schunk D, Stein MB, Svento R, Tiemeier H, Timmers P, Turley P, Ursano RJ, Wagner GG,  
10 Wilson JF, Gratten J, Lee JJ, Cesarini D, Benjamin DJ, Koellinger PD, Beauchamp JP.  
11 Genome-wide association analyses of risk tolerance and risky behaviors in over 1 million  
12 individuals identify hundreds of loci and shared genetic influences. *Nat Genet.* 2019;51:245-257.  
13 26. Nagel M, Jansen PR, Stringer S, Watanabe K, de Leeuw CA, Bryois J, Savage JE,  
14 Hammerschlag AR, Skene NG, Munoz-Manchado AB, andMe Research T, White T, Tiemeier H,  
15 Linnarsson S, Hjerling-Leffler J, Polderman TJC, Sullivan PF, van der Sluis S, Posthuma D.  
16 Meta-analysis of genome-wide association studies for neuroticism in 449,484 individuals  
17 identifies novel genetic loci and pathways. *Nat Genet.* 2018;50:920-927.  
18 27. Nievergelt CM, Maihofer AX, Klengel T, Atkinson EG, Chen CY, Choi KW, Coleman JRI,  
19 Dalvie S, Duncan LE, Gelernter J, Levey DF, Logue MW, Polimanti R, Provost AC,  
20 Ratanatharathorn A, Stein MB, Torres K, Aiello AE, Almlil LM, Amstadter AB, Andersen SB,  
21 Andreassen OA, Arbisi PA, Ashley-Koch AE, Austin SB, Avdibegovic E, Babic D, Baekvad-  
22 Hansen M, Baker DG, Beckham JC, Bierut LJ, Bisson JI, Boks MP, Bolger EA, Borglum AD,  
23 Bradley B, Brashear M, Breen G, Bryant RA, Bustamante AC, Bybjerg-Grauholm J, Calabrese  
24 JR, Caldas-de-Almeida JM, Dale AM, Daly MJ, Daskalakis NP, Deckert J, Delahanty DL,  
25 Dennis MF, Disner SG, Domschke K, Dzubur-Kulenovic A, Erbes CR, Evans A, Farrer LA,  
26 Feeny NC, Flory JD, Forbes D, Franz CE, Galea S, Garrett ME, Gelaye B, Geuze E, Gillespie  
27 C, Uka AG, Gordon SD, Guffanti G, Hammamieh R, Harnal S, Hauser MA, Heath AC,  
28 Hemmings SMJ, Hougaard DM, Jakovljevic M, Jett M, Johnson EO, Jones I, Jovanovic T, Qin  
29 XJ, Junglen AG, Karstoft KI, Kaufman ML, Kessler RC, Khan A, Kimbrel NA, King AP, Koen N,  
30 Kranzler HR, Kremen WS, Lawford BR, Lebois LAM, Lewis CE, Linnstaedt SD, Lori A, Lugonja  
31 B, Luykx JJ, Lyons MJ, Maples-Keller J, Marmar C, Martin AR, Martin NG, Maurer D,  
32 Mavissakalian MR, McFarlane A, McGlinchey RE, McLaughlin KA, McLean SA, McLeay S,  
33 Mehta D, Milberg WP, Miller MW, Morey RA, Morris CP, Mors O, Mortensen PB, Neale BM,  
34 Nelson EC, Nordentoft M, Norman SB, O'Donnell M, Orcutt HK, Panizzon MS, Peters ES,  
35 Peterson AL, Peverill M, Pietrzak RH, Polusny MA, Rice JP, Ripke S, Risbrough VB, Roberts  
36 AL, Rothbaum AO, Rothbaum BO, Roy-Byrne P, Ruggiero K, Rung A, Rutten BPF, Saccone  
37 NL, Sanchez SE, Schijven D, Seedat S, Seligowski AV, Seng JS, Sheerin CM, Silove D, Smith  
38 AK, Smoller JW, Sponheim SR, Stein DJ, Stevens JS, Sumner JA, Teicher MH, Thompson WK,  
39 Trapido E, Uddin M, Ursano RJ, van den Heuvel LL, Van Hooff M, Vermetten E, Vinkers CH,  
40 Voisey J, Wang Y, Wang Z, Werge T, Williams MA, Williamson DE, Winternitz S, Wolf C, Wolf  
41 EJ, Wolff JD, Yehuda R, Young RM, Young KA, Zhao H, Zoellner LA, Liberzon I, Ressler KJ,  
42 Haas M, Koenen KC. International meta-analysis of PTSD genome-wide association studies  
43 identifies sex- and ancestry-specific genetic risk loci. *Nat Commun.* 2019;10:4558.  
44 28. Stahl EA, Breen G, Forstner AJ, McQuillin A, Ripke S, Trubetskov V, Mattheisen M, Wang  
45 Y, Coleman JRI, Gaspar HA, de Leeuw CA, Steinberg S, Pavlides JMW, Trzaskowski M, Byrne  
46 EM, Pers TH, Holmans PA, Richards AL, Abbott L, Agerbo E, Akil H, Albani D, Alliey-Rodriguez  
47 N, Als TD, Anjorin A, Antilla V, Awasthi S, Badner JA, Baekvad-Hansen M, Barchas JD, Bass N,  
48 Bauer M, Belliveau R, Bergen SE, Pedersen CB, Boen E, Boks MP, Boocock J, Budde M,  
49 Bunney W, Burmeister M, Bybjerg-Grauholm J, Byerley W, Casas M, Cerrato F, Cervantes P,  
50 Chambert K, Charney AW, Chen D, Churchhouse C, Clarke TK, Coryell W, Craig DW,  
51 Cruceanu C, Curtis D, Czerski PM, Dale AM, de Jong S, Degenhardt F, Del-Favero J, DePaulo  
52 JR, Djurovic S, Dobbyn AL, Dumont A, Elvsashagen T, Escott-Price V, Fan CC, Fischer SB,  
53 Flickinger M, Foroud TM, Forty L, Frank J, Fraser C, Freimer NB, Frisen L, Gade K, Gage D,  
54  
55  
56  
57  
58  
59  
60

- 1  
2  
3 Garnham J, Giambartolomei C, Pedersen MG, Goldstein J, Gordon SD, Gordon-Smith K, Green  
4 EK, Green MJ, Greenwood TA, Grove J, Guan W, Guzman-Parra J, Hamshere ML, Hautzinger  
5 M, Heilbronner U, Herms S, Hipolito M, Hoffmann P, Holland D, Huckins L, Jamain S, Johnson  
6 JS, Jureus A, Kandaswamy R, Karlsson R, Kennedy JL, Kittel-Schneider S, Knowles JA,  
7 Kogevinas M, Koller AC, Kupka R, Lavebratt C, Lawrence J, Lawson WB, Leber M, Lee PH,  
8 Levy SE, Li JZ, Liu C, Lucae S, Maaser A, MacIntyre DJ, Mahon PB, Maier W, Martinsson L,  
9 McCarroll S, McGuffin P, McInnis MG, McKay JD, Medeiros H, Medland SE, Meng F, Milani L,  
10 Montgomery GW, Morris DW, Muhleisen TW, Mullins N, Nguyen H, Nievergelt CM, Adolfsson  
11 AN, Nwulia EA, O'Donovan C, Loohuis LMO, Ori APS, Oruc L, Osby U, Perlis RH, Perry A,  
12 Pfennig A, Potash JB, Purcell SM, Regeer EJ, Reif A, Reinbold CS, Rice JP, Rivas F, Rivera M,  
13 Roussos P, Ruderfer DM, Ryu E, Sanchez-Mora C, Schatzberg AF, Scheftner WA, Schork NJ,  
14 Shannon Weickert C, Shekhtman T, Shilling PD, Sigurdsson E, Slaney C, Smeland OB, Sobell  
15 JL, Soholm Hansen C, Spijker AT, St Clair D, Steffens M, Strauss JS, Streit F, Strohmaier J,  
16 Szelinger S, Thompson RC, Thorgeirsson TE, Treutlein J, Vedder H, Wang W, Watson SJ,  
17 Weickert TW, Witt SH, Xi S, Xu W, Young AH, Zandi P, Zhang P, Zollner S, e QC, Consortium  
18 B, Adolfsson R, Agartz I, Alda M, Backlund L, Baune BT, Bellivier F, Berrettini WH, Biernacka  
19 JM, Blackwood DHR, Boehnke M, Borglum AD, Corvin A, Craddock N, Daly MJ, Dannlowski U,  
20 Esko T, Etain B, Frye M, Fullerton JM, Gershon ES, Gill M, Goes F, Grigoriou-Serbanescu M,  
21 Hauser J, Hougaard DM, Hultman CM, Jones I, Jones LA, Kahn RS, Kirov G, Landen M,  
22 Leboyer M, Lewis CM, Li QS, Lissowska J, Martin NG, Mayoral F, McElroy SL, McIntosh AM,  
23 McMahan FJ, Melle I, Metspalu A, Mitchell PB, Morken G, Mors O, Mortensen PB, Muller-  
24 Myhsok B, Myers RM, Neale BM, Nimgaonkar V, Nordentoft M, Nothen MM, O'Donovan MC,  
25 Oedegaard KJ, Owen MJ, Paciga SA, Pato C, Pato MT, Posthuma D, Ramos-Quiroga JA,  
26 Ribases M, Rietschel M, Rouleau GA, Schalling M, Schofield PR, Schulze TG, Serretti A,  
27 Smoller JW, Stefansson H, Stefansson K, Stordal E, Sullivan PF, Turecki G, Vaaler AE, Vieta E,  
28 Vincent JB, Werge T, Nurnberger JI, Wray NR, Di Florio A, Edenberg HJ, Cichon S, Ophoff RA,  
29 Scott LJ, Andreassen OA, Kelsoe J, Sklar P, Bipolar Disorder Working Group of the Psychiatric  
30 Genomics C. Genome-wide association study identifies 30 loci associated with bipolar disorder.  
31 Nat Genet. 2019;51:793-803.  
32  
33 29. Yengo L, Sidorenko J, Kemper KE, Zheng Z, Wood AR, Weedon MN, Frayling TM,  
34 Hirschhorn J, Yang J, Visscher PM, Consortium G. Meta-analysis of genome-wide association  
35 studies for height and body mass index in approximately 700000 individuals of European  
36 ancestry. Hum Mol Genet. 2018;27:3641-3649.  
37  
38 30. Johnston KJA, Adams MJ, Nicholl BI, Ward J, Strawbridge RJ, Ferguson A, McIntosh AM,  
39 Bailey MES, Smith DJ. Genome-wide association study of multisite chronic pain in UK Biobank.  
40 PLoS Genet. 2019;15:e1008164.  
41  
42 31. Liu M, Jiang Y, Wedow R, Li Y, Brazel DM, Chen F, Datta G, Davila-Velderrain J, McGuire  
43 D, Tian C, Zhan X, and Me Research T, Psychiatry HA-I, Choquet H, Docherty AR, Faul JD,  
44 Foerster JR, Fritsche LG, Gabrielsen ME, Gordon SD, Haessler J, Hottenga JJ, Huang H, Jang  
45 SK, Jansen PR, Ling Y, Magi R, Matoba N, McMahon G, Mulas A, Orru V, Palviainen T, Pandit  
46 A, Reginsson GW, Skogholt AH, Smith JA, Taylor AE, Turman C, Willemsen G, Young H,  
47 Young KA, Zajac GJM, Zhao W, Zhou W, Bjornsdottir G, Boardman JD, Boehnke M, Boomsma  
48 DI, Chen C, Cucca F, Davies GE, Eaton CB, Ehringer MA, Esko T, Fiorillo E, Gillespie NA,  
49 Gudbjartsson DF, Haller T, Harris KM, Heath AC, Hewitt JK, Hickie IB, Hokanson JE, Hopfer  
50 CJ, Hunter DJ, Iacono WG, Johnson EO, Kamatani Y, Kardia SLR, Keller MC, Kellis M,  
51 Kooperberg C, Kraft P, Krauter KS, Laakso M, Lind PA, Loukola A, Lutz SM, Madden PAF,  
52 Martin NG, McGue M, McQueen MB, Medland SE, Metspalu A, Mohlke KL, Nielsen JB, Okada  
53 Y, Peters U, Polderman TJC, Posthuma D, Reiner AP, Rice JP, Rimm E, Rose RJ, Runarsdottir  
54 V, Stallings MC, Stancakova A, Stefansson H, Thai KK, Tindle HA, Tyrifingsson T, Wall TL, Weir  
55 DR, Weisner C, Whitfield JB, Winsvold BS, Yin J, Zuccolo L, Bierut LJ, Hveem K, Lee JJ,  
56 Munafo MR, Saccone NL, Willer CJ, Cornelis MC, David SP, Hinds DA, Jorgenson E, Kaprio J,  
57  
58  
59  
60

1  
2  
3 Stitzel JA, Stefansson K, Thorgeirsson TE, Abecasis G, Liu DJ, Vrieze S. Association studies of  
4 up to 1.2 million individuals yield new insights into the genetic etiology of tobacco and alcohol  
5 use. *Nat Genet.* 2019;51:237-244.

6 32. Howard DM, Adams MJ, Clarke TK, Hafferty JD, Gibson J, Shirali M, Coleman JRI,  
7 Hagenars SP, Ward J, Wigmore EM, Alloza C, Shen X, Barbu MC, Xu EY, Whalley HC,  
8 Marioni RE, Porteous DJ, Davies G, Deary IJ, Hemani G, Berger K, Teismann H, Rawal R, Arolt  
9 V, Baune BT, Dannowski U, Domschke K, Tian C, Hinds DA, andMe Research T, Major  
10 Depressive Disorder Working Group of the Psychiatric Genomics C, Trzaskowski M, Byrne EM,  
11 Ripke S, Smith DJ, Sullivan PF, Wray NR, Breen G, Lewis CM, McIntosh AM. Genome-wide  
12 meta-analysis of depression identifies 102 independent variants and highlights the importance  
13 of the prefrontal brain regions. *Nat Neurosci.* 2019;22:343-352.

14 33. Jansen PR, Watanabe K, Stringer S, Skene N, Bryois J, Hammerschlag AR, de Leeuw CA,  
15 Benjamins JS, Munoz-Manchado AB, Nagel M, Savage JE, Tiemeier H, White T, andMe  
16 Research T, Tung JY, Hinds DA, Vacic V, Wang X, Sullivan PF, van der Sluis S, Polderman  
17 TJC, Smit AB, Hjerling-Leffler J, Van Someren EJW, Posthuma D. Genome-wide analysis of  
18 insomnia in 1,331,010 individuals identifies new risk loci and functional pathways. *Nat Genet.*  
19 2019;51:394-403.

20 34. Zheng J, Erzurumluoglu AM, Elsworth BL, Kemp JP, Howe L, Haycock PC, Hemani G,  
21 Tansey K, Laurin C, Early G, Lifecourse Epidemiology Eczema C, Pourcain BS, Warrington NM,  
22 Finucane HK, Price AL, Bulik-Sullivan BK, Anttila V, Paternoster L, Gaunt TR, Evans DM, Neale  
23 BM. LD Hub: a centralized database and web interface to perform LD score regression that  
24 maximizes the potential of summary level GWAS data for SNP heritability and genetic  
25 correlation analysis. *Bioinformatics.* 2017;33:272-279.

26 35. Ahmedani BK, Peterson EL, Hu Y, Rossom RC, Lynch F, Lu CY, Waitzfelder BE, Owen-  
27 Smith AA, Hubble S, Prabhakar D, Williams LK, Zeld N, Mutter E, Beck A, Tolsma D, Simon GE.  
28 Major Physical Health Conditions and Risk of Suicide. *Am J Prev Med.* 2017;53:308-315.

29 36. Fazel S, Runeson B. Suicide. *N Engl J Med.* 2020;382:266-274.

30 37. Hubel C, Gaspar HA, Coleman JRI, Finucane H, Purves KL, Hanscombe KB, Prokopenko I,  
31 investigators M, Graff M, Ngwa JS, Workalemahu T, Eating Disorders Working Group of the  
32 Psychiatric Genomics C, Major Depressive Disorder Working Group of the Psychiatric  
33 Genomics C, Schizophrenia Working Group of the Psychiatric Genomics C, Tourette  
34 Syndrome/Obsessive-Compulsive Disorder Working Group of the Psychiatric Genomics C,  
35 O'Reilly PF, Bulik CM, Breen G. Genomics of body fat percentage may contribute to sex bias in  
36 anorexia nervosa. *Am J Med Genet B Neuropsychiatr Genet.* 2019;180:428-438.

37 38. Haworth S, Kho PF, Holgerson PL, Hwang LD, Timpson NJ, Renteria ME, Johansson I,  
38 Cuellar-Partida G. Assessment and visualization of phenome-wide causal relationships using  
39 genetic data: an application to dental caries and periodontitis. *Eur J Hum Genet.* 2021;29:300-  
40 308.

41 39. Zhu Z, Zheng Z, Zhang F, Wu Y, Trzaskowski M, Maier R, Robinson MR, McGrath JJ,  
42 Visscher PM, Wray NR, Yang J. Causal associations between risk factors and common  
43 diseases inferred from GWAS summary data. *Nat Commun.* 2018;9:224.

44 40. Yang J, Lee SH, Goddard ME, Visscher PM. GCTA: a tool for genome-wide complex trait  
45 analysis. *Am J Hum Genet.* 2011;88:76-82.

46 41. Genomes Project C, Auton A, Brooks LD, Durbin RM, Garrison EP, Kang HM, Korbel JO,  
47 Marchini JL, McCarthy S, McVean GA, Abecasis GR. A global reference for human genetic  
48 variation. *Nature.* 2015;526:68-74.

49 42. de Leeuw CA, Mooij JM, Heskes T, Posthuma D. MAGMA: generalized gene-set analysis  
50 of GWAS data. *PLoS Comput Biol.* 2015;11:e1004219.

51 43. Watanabe K, Taskesen E, van Bochoven A, Posthuma D. Functional mapping and  
52 annotation of genetic associations with FUMA. *Nat Commun.* 2017;8:1826.  
53  
54  
55  
56  
57  
58  
59  
60

- 1  
2  
3  
4  
5  
6  
7  
8  
9  
10  
11  
12  
13  
14  
15  
16  
17  
18  
19  
20  
21  
22  
23  
24  
25  
26  
27  
28  
29  
30  
31  
32  
33  
34  
35  
36  
37  
38  
39  
40  
41  
42  
43  
44  
45  
46  
47  
48  
49  
50  
51  
52  
53  
54  
55  
56  
57  
58  
59  
60
44. Consortium GT, Laboratory DA, Coordinating Center -Analysis Working G, Statistical Methods groups-Analysis Working G, Enhancing Gg, Fund NIHC, Nih/Nci, Nih/Nhgri, Nih/Nimh, Nih/Nida, Biospecimen Collection Source Site N, Biospecimen Collection Source Site R, Biospecimen Core Resource V, Brain Bank Repository-University of Miami Brain Endowment B, Leidos Biomedical-Project M, Study E, Genome Browser Data I, Visualization EBI, Genome Browser Data I, Visualization-Ucsc Genomics Institute UoCSC, Lead a, Laboratory DA, Coordinating C, management NIHp, Biospecimen c, Pathology, e QTLmwg, Battle A, Brown CD, Engelhardt BE, Montgomery SB. Genetic effects on gene expression across human tissues. *Nature*. 2017;550:204-213.
45. Gaspar HA, Breen G. Drug enrichment and discovery from schizophrenia genome-wide association results: an analysis and visualisation approach. *Sci Rep*. 2017;7:12460.
46. Wagner AH, Coffman AC, Ainscough BJ, Spies NC, Skidmore ZL, Campbell KM, Krysiak K, Pan D, McMichael JF, Eldred JM, Walker JR, Wilson RK, Mardis ER, Griffith M, Griffith OL. DGIdb 2.0: mining clinically relevant drug-gene interactions. *Nucleic Acids Res*. 2016;44:D1036-1044.
47. Roth BL, Lopez E, Patel S, Kroeze WK. The Multiplicity of Serotonin Receptors: Uselessly Diverse Molecules or an Embarrassment of Riches? *The Neuroscientist*. 2000;6:252-262.
48. Wu Y, Zeng J, Zhang F, Zhu Z, Qi T, Zheng Z, Lloyd-Jones LR, Marioni RE, Martin NG, Montgomery GW, Deary IJ, Wray NR, Visscher PM, McRae AF, Yang J. Integrative analysis of omics summary data reveals putative mechanisms underlying complex traits. *Nat Commun*. 2018;9:918.
49. Zhu Z, Zhang F, Hu H, Bakshi A, Robinson MR, Powell JE, Montgomery GW, Goddard ME, Wray NR, Visscher PM, Yang J. Integration of summary data from GWAS and eQTL studies predicts complex trait gene targets. *Nat Genet*. 2016;48:481-487.
50. de Klein N, Tsai EA, Vochteloo M, Baird D, Huang Y, Chen CY, van Dam S, Oelen R, Deelen P, Bakker OB, El Garwany O, Ouyang Z, Marshall EE, Zavodszky MI, van Rheenen W, Bakker MK, Veldink J, Gaunt TR, Runz H, Franke L, Westra HJ. Brain expression quantitative trait locus and network analyses reveal downstream effects and putative drivers for brain-related diseases. *Nat Genet*. 2023.
51. Ge T, Chen CY, Ni Y, Feng YA, Smoller JW. Polygenic prediction via Bayesian regression and continuous shrinkage priors. *Nat Commun*. 2019;10:1776.
52. Sollis E, Mosaku A, Abid A, Buniello A, Cerezo M, Gil L, Groza T, Gunes O, Hall P, Hayhurst J, Ibrahim A, Ji Y, John S, Lewis E, MacArthur JAL, McMahon A, Osumi-Sutherland D, Panoutsopoulou K, Pendlington Z, Ramachandran S, Stefancsik R, Stewart J, Whetzel P, Wilson R, Hindorff L, Cunningham F, Lambert SA, Inouye M, Parkinson H, Harris LW. The NHGRI-EBI GWAS Catalog: knowledgebase and deposition resource. *Nucleic Acids Res*. 2023;51:D977-D985.
53. Ikeda M, Takahashi A, Kamatani Y, Momozawa Y, Saito T, Kondo K, Shimasaki A, Kawase K, Sakusabe T, Iwayama Y, Toyota T, Wakuda T, Kikuchi M, Kanahara N, Yamamori H, Yasuda Y, Watanabe Y, Hoya S, Aleksic B, Kushima I, Arai H, Takaki M, Hattori K, Kunugi H, Okahisa Y, Ohnuma T, Ozaki N, Someya T, Hashimoto R, Yoshikawa T, Kubo M, Iwata N. Genome-Wide Association Study Detected Novel Susceptibility Genes for Schizophrenia and Shared Trans-Populations/Diseases Genetic Effect. *Schizophr Bull*. 2019;45:824-834.
54. Pfennig A, Kunzel HE, Kern N, Ising M, Majer M, Fuchs B, Ernst G, Holsboer F, Binder EB. Hypothalamus-pituitary-adrenal system regulation and suicidal behavior in depression. *Biol Psychiatry*. 2005;57:336-342.
55. Mann JJ, Rizk MM. A Brain-Centric Model of Suicidal Behavior. *Am J Psychiatry*. 2020;177:902-916.

## Figure Titles and Legends

**Figure 1: Manhattan plot of multi-ancestry GWAS meta-analysis of suicide attempt.** The x-axis shows genomic position and the y-axis shows statistical significance as  $-\log_{10}(P \text{ value})$ . The horizontal line shows the genome-wide significance threshold ( $P < 5.0 \times 10^{-8}$ ). Labels represent the nearest gene to the index SNP. Regional plots of the eight genome-wide significant loci across ancestries and the four genome-wide significant loci in EUR are presented in Supplementary Figures S3-S14.

**Figure 2: Forest plot of genetic correlations of the multi-ancestry GWAS meta-analyses of suicide attempt with physical and mental health phenotypes.** The x-axis presents genetic correlation values with 95% confidence intervals (CI), and the y-axis presents the discovery GWAS for multiple phenotypes. ISGC = International Suicide Genetics Consortium meta-analysis; ISGC + MVP = the primary meta-analysis including GWAS from both ISGC and Million Veterans Program sets of cohorts; ISGC + MVP | MDD & PTSD = the combined GWAS meta-analysis of both cohorts conditioning on major depressive disorder and post-traumatic stress disorder.

**Table 1.** Summary of GWAS cohorts and primary ancestry admixtures

<b>Cohort</b>	<b>Attempt/Death</b>	<b>Ascertainment</b>	<b>Cases</b>	<b>Controls</b>
<b>EUR</b>				
Army STARRS	Attempt	Military	670	10,637
Australian Genetics of Depression Study	Attempt	Psychiatric	2,792	20,193
Columbia University	Attempt & Death	Psychiatric	577	1,233
Genetic Investigation of Suicide and SA (GISS)	Attempt	Psychiatric	660	660
German Borderline Genomics Consortium	Attempt	Psychiatric	481	1,653
iPSYCH	Attempt	Population	7,003	52,227
Janssen	Attempt	Psychiatric	255	1,684
Million Veteran Program	Attempt	Military	9,196	287,370
Psychiatric Genomics Consortium BIP	Attempt	Psychiatric	3,214	17,642
Psychiatric Genomics Consortium ED	Attempt	Psychiatric	170	5,070
Psychiatric Genomics Consortium MDD	Attempt	Psychiatric	1,528	16,626
Psychiatric Genomics Consortium SCZ	Attempt	Psychiatric	1,640	7,112
UK Biobank	Attempt	Population	2,433	334,766
University of Utah	Death	Population	4,692	20,702
Yale-Penn	Attempt	Psychiatric	475	1,817
<b>Total</b>			<b>35,786</b>	<b>779,392</b>
<b>EAS</b>				
CONVERGE Consortium	Attempt	Psychiatric	1,148	6,515
Kobe University	Death	Population	746	14,049
Million Veteran Program	Attempt	Military	115	4,082
<b>Total</b>			<b>2,009</b>	<b>24,646</b>
<b>AA</b>				
Grady Trauma Project	Attempt	General medical	669	4,473
Million Veteran Program	Attempt	Military	3,507	74,306
Yale-Penn	Attempt	Psychiatric	629	2,902
<b>Total</b>			<b>4,805</b>	<b>81,681</b>
<b>LAT</b>				
Million Veteran Program	Attempt	Military	1,271	29,306
<b>Multi-ancestry Total</b>			<b>43,871</b>	<b>915,025</b>

*Note:* EUR = European, EAS = East Asian, AFR = African, LAT = Hispanic/Latino, BIP = bipolar disorder, ED = eating disorders, MDD = major depressive disorder, SCZ = schizophrenia

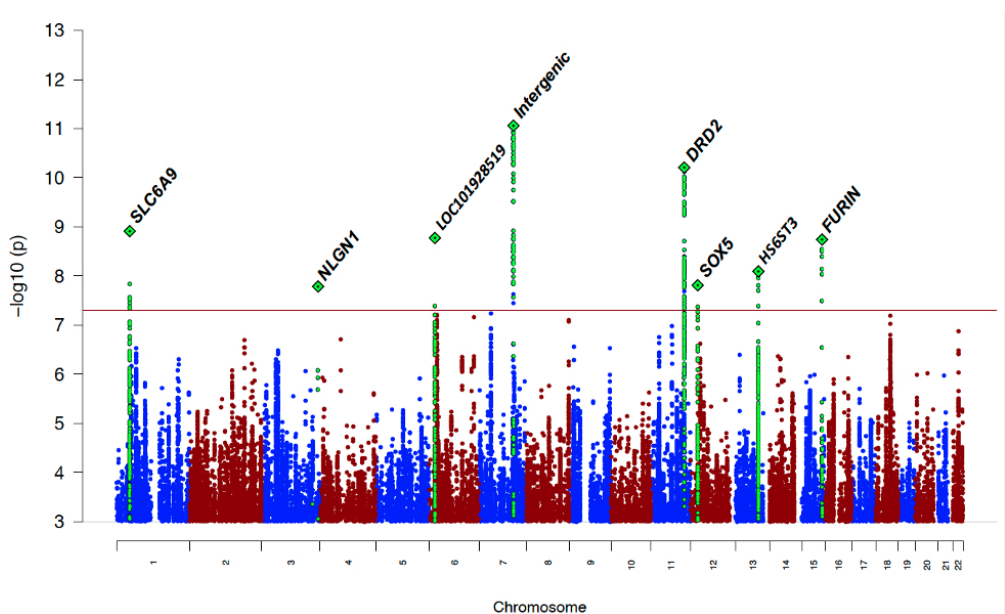
**Table 2: Results from meta-analyses of suicide attempt showing the index SNP from each genome-wide significant locus**

CHR	Index SNP	BP	Locus Start..Stop	Nearest gene (distance to index SNP in kb)	P	OR	SE	A1	A2	Direction	N <sub>Cohorts</sub>	N <sub>Total</sub>	N <sub>Eff</sub>
<b>Multi-Ancestry</b>													
1	rs3791129	44480093	44,462,155..44,497,134	SLC6A9 (0.0)	1.22E-09	1.055	0.009	G	A	+-----+ +?+++?+?++	18	933,136	158,078
3	rs7649709	173129819	173,113,742..174,012,162	NLGN1 (0.0)	2.32E-08	1.054	0.010	A	C	+++++---- +?+-+++++	21	954,890	164,921
6	rs62404522	19307114	19,068,774..19,180,711	LOC101928519 (-76.4)	1.68E-09	1.067	0.011	C	T	+-----+ ++-+----	22	956,659	166,924
7	rs62474683	115020725	114,763,653..114,871,409	LINC01392 (-149.3)	8.72E-12	1.054	0.008	A	G	+-----+ +++	22	958,896	167,455
11	rs7131627	113299829	113,280,327..113,346,120	DRD2 (0.0)	6.2E-11	1.053	0.008	G	A	+++++-- +++++----?-	21	944,101	164,620
12	rs17485141	24213634	23,682,438..24,715,425	SOX5 (0.0)	1.54E-08	1.049	0.009	C	T	+++++---- +++++----	22	958,896	167,455
13	rs9525171	96908223	96,742,361..97,491,816	HS6ST3 (0.0)	8.07E-09	1.044	0.008	C	G	+-----+ +++++----	22	958,896	167,455
15	rs17514846	91416550	91,411,818..91,426,687	FURIN (0.0)	1.81E-09	1.048	0.008	C	A	+++++---- +----+?+?+++	20	938,959	162,145
<b>EUR</b>													
1	rs2503185	66461401	66,258,193..66,840,262	PDE4B (0.0)	3.42E-08	1.047	0.008	A	G	+++++---- ++	15	815,178	136,860
6	rs35869525	26946687	29,640,168..30,152,231	--MHC--	2.18E-08	1.089	0.015	C	T	+?--+---- +++++	14	803,626	134,461
14	rs850261	57346423	57,278,724..57,398,026	OTX2-AS1 (0.0)	1.37E-08	1.049	0.008	A	G	+++++---- +++++----	15	815,178	136,860
22	rs2284000	37053338	36,956,904..37,099,797	CACNG2 (0.0)	1.98E-08	1.055	0.010	C	G	+++++---- +?+++	14	812,886	135,108

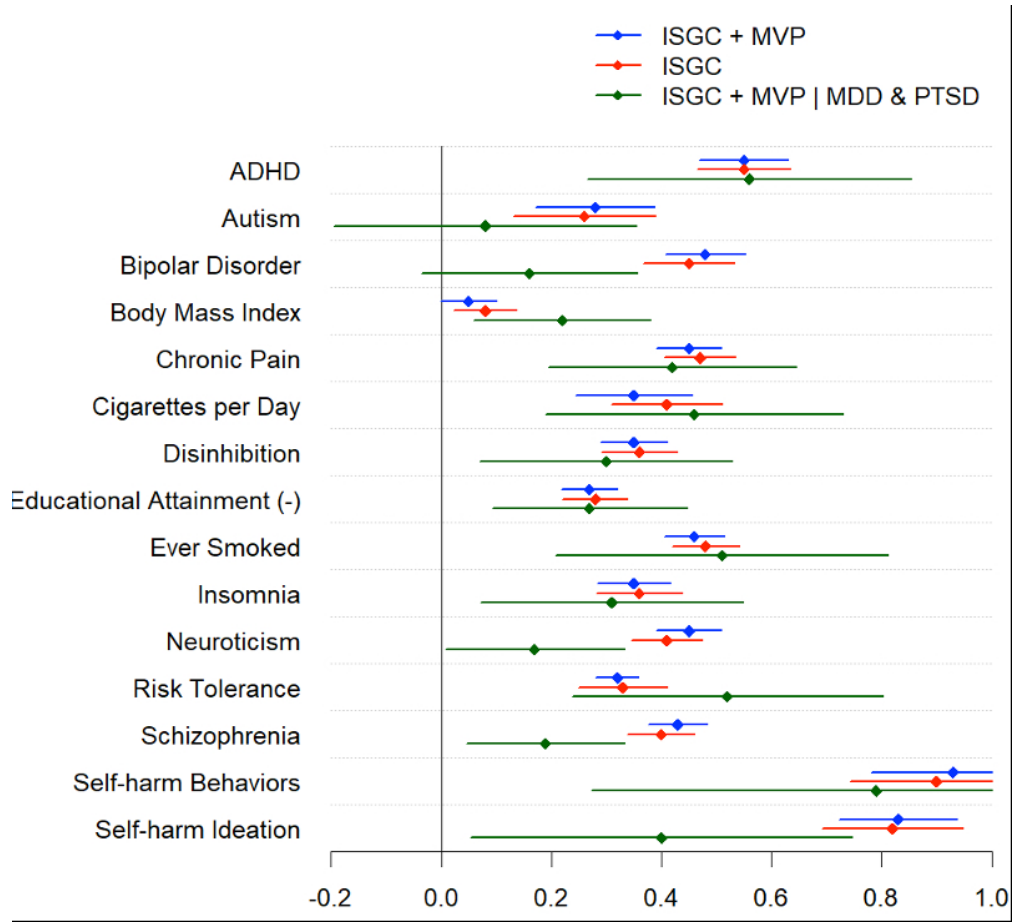
Note: CHR = chromosome, SNP = single nucleotide polymorphism, BP = GRCh37 base pair position, kb = kilobases, OR = odds ratio, SE = standard error, A1 = tested allele, A2 = other allele, EUR = European, N<sub>Cohorts</sub> = number of cohorts included, N<sub>Total</sub> = Total cases and controls, N<sub>Eff</sub> = total effective sample size, MHC = major histocompatibility complex.



1  
2  
3  
4  
5  
6  
7  
8  
9  
10  
11  
12  
13  
14  
15  
16  
17  
18  
19  
20  
21  
22  
23  
24  
25  
26  
27  
28  
29  
30  
31  
32  
33  
34  
35  
36  
37  
38  
39  
40  
41  
42  
43  
44  
45  
46  
47  
48  
49  
50  
51  
52  
53  
54  
55  
56  
57  
58  
59  
60



165x100mm (150 x 150 DPI)



135x124mm (150 x 150 DPI)